



Toy Stories
Friday, March 25th, 2022
10am Est

CYBER 16 TOY STORIES

Friday March 25th 10am est



Join us for our premier auction of 2022! Many wonderful additions for any collection are included in this auction, which features a selection of Reynolds Banks, Souvenirs, Cast Iron Mechanical and Still Banks, Automotive, Windup Toys, Bell Toys and more!

Questions? Call or Text Bre Day at 412-841-0623 and Julian Abernethy at 908-323-3169 or Email bre@cybertoyauctions.com or julian@cybertoyauctions.com

[LARGER/ ADDITIONAL IMAGES ON LIVEAUCTIONEERS.COM](http://LARGER/ADDITIONAL_IMAGES_ON_LIVEAUCTIONEERS.COM)

LOT

1 Three Banthrico Banks

Chicago, IL - 1950's/1960's. Included are a National Bank of Wilson, Clyde Savings and The Northern Trust Company. Excellent or Better Condition. One trap missing lock mechanism. Estimate: 60.00 - 90.00



2 Three Building Banks

Two Banthrico / One Preferred Bank Service Company. Chicago / New York City - 1930's/1950's. The Banthrico Banks include a home ("Brookline Savings Bank"), Cook County Federal Savings Building. The bank by Preferred Bank Service Company is a souvenir of the Chicago World's Fair of 1933. Pristine or Better Condition. Estimate: 125.00 - 175.00



3 Four Banthrico Building Banks

Chicago, IL. 1940's / 1950's. Included are two St. Paul Federal Savings, one with gold finish and one with bronze finish, a Citizens Savings & Loan Company and a Chittenden Trust Company. Excellent or Better Condition. Estimate: 100.00 - 150.00



4 Four Banthrico Building Banks

Chicago, IL. 1940's. Included are a Fidelity Federal Savings, a Juliet Federal Savings, a Tallahassee Federal Savings and a National Federal Savings. Excellent or Better Condition. Estimate: 100.00 - 150.00



LOT

5 Four Banthrico Building Banks

Chicago, IL. 1940's/1950's. Included are a First Federal Savings, an Olympic Savings, a First Federal Savings (La Porte, IN), and a Great Northern Building & Loan Co. Very Fine to Pristine Condition. One with minor surface rust. Estimate: 75.00 - 125.00



6 Three Banthrico Banks

Chicago, IL. 1940's/1950's. Includes a Petersburg Mutual Savings, a Banco de Nuevo Louis, S. A. and a Commonwealth National Bank of San Francisco. Very Fine to Pristine Condition. Estimate: 100.00 - 150.00



7 Three Banthrico Banks

Chicago, IL - 1950's. Included are a First Federal Savings & Loan (Greenville, SC), an Improvement Savings & Loan Assn, and a Lawn Savings. Very Fine to Pristine Condition. Estimate: 75.00 - 125.00



8 Three Banthrico Banks

Chicago, IL. 1950's. Includes a Northwestern Bank, Radio Tower (trap missing), a Worcester Federal Savings and a Citizens Bank Radio Tower. Excellent or Better. Estimate: 75.00 - 125.00



Toy Stories - Cyber 16 3/25/2022

LARGER/ ADDITIONAL IMAGES ON LIVEAUCTIONEERS.COM

LOT #**9 Two Banthrico Banks**

Chicago, IL. 1960's. Included are a souvenir for the Mt. Greylock War Memorial and a Tower Federal Savings. Pristine Condition. Estimate: 60.00 - 90.00

**LOT #****14 Two Banthrico Banks**

Chicago, IL. 1950's. Included are Indiana's First Capital and a Mid-West National Insurance Company. Very Fine / Pristine Condition. Estimate: 60.00 - 90.00

**10 Two Banthrico Building Banks**

Chicago, IL. 1950's. Included are The First National Bank of Casper and a First Security. Excellent Condition. Estimate: 60.00 - 90.00

**15 Three Banthrico Banks**

Chicago, IL. 1970's / 1980's. Included are an Eastern Trust & Co. 75th Anniversary Clock, a Statue of Liberty for Mercer County and a First National Bank of Chicago. Excellent or Better Condition. Statue of Liberty Missing its trap. Estimate: 75.00 - 125.00

**11 Three Banthrico Banks**

Chicago, IL. 1950's. Included are a Hoyne Savings and Loan Association, a First National Bank (Springfield, IL) and a Wilmington Mutual Savings & Loan Assn. Excellent or Better Condition. Estimate: 75.00 - 125.00

**16 Two Banthrico Building Banks**

Chicago, IL. 1950's / 1960's. Included are an Alaska State Bank and a Coast Federal Savings (Lacks Trap). Pristine Condition. Estimate: 100.00 - 150.00

**12 Three Banthrico Banks**

Chicago, IL. 1950's. Included are a Virginia Mutual Savings, an Exchange National Bank - Colorado Springs and The Exchange Bank of St. Augustine. Pristine or Better Condition. Estimate: 100.00 - 150.00

**17 Two Banthrico Banks**

Chicago, IL. 1950's / 1960's. Included are an Alamo Bank and an Exchange National Bank of Chicago. Pristine Condition. Estimate: 100.00 - 150.00

**13 Three Banthrico Coliseum / Arena Shaped Banks**

Chicago, IL. 1950's / 1960's. Included are a Brookfield Federal Savings, an International Building Credit Union and a First National Bank (Wamego, KS). Pristine or Better Condition. Estimate: 75.00 - 125.00

**18 Two Banthrico Banks**

Chicago, IL. 1950's / 1960's. Included are a Citizens Federal Savings & Loan Association of Indiana and a DeLand Federal Savings. Excellent to Pristine Condition. Estimate: 75.00 - 125.00



Toy Stories - Cyber 16 3/25/2022

LARGER/ ADDITIONAL IMAGES ON LIVEAUCTIONEERS.COM

LOT #**19 Woolworth Building / First Federal Banks**

American - 1930's / 1940's. The Woolworth Building with a tiny chip out of it, the other is pristine. Very Fine to Pristine Condition. Estimate: 50.00 - 75.00

**LOT #****25 Two Banthrico Banks**

Chicago, IL. 1950's. Included are a Texas Bank and a First National Bank (Amarillo, TX). Very Fine / Excellent Condition Estimate: 100.00 - 150.00

**20 Ford City Bank**

Banthrico. Chicago, IL. 1960's. Excellent Plus Condition. Estimate: 40.00 - 60.00

**26 Two Banthrico Banks**

Chicago, IL - 1960's / 1970's. Included are an Erie County Savings Bank and a Georgia Life Building. Excellent Overall. Georgia Life with rust underneath. Estimate: 60.00 - 90.00

**21 Bankers Life Company of New York**

American - 1940's. We are not sure who made this early bank, but it has a keylock trap and the company was established in 1939. Not locked, but mechanism looks complete. Excellent Condition. Estimate: 75.00 - 125.00

**27 Two Banthrico Banks**

Chicago, IL. 1960's / 1970's. Included are a Pullman Bank & Trust Co. and a First National Bank of Denver. Excellent Plus or Better Condition. Estimate: 60.00 - 90.00

**22 South Paris Savings Bank**

American Art Works. Ohio - 1930's. Excellent Plus Condition. Estimate: 75.00 - 125.00

**28 Four Building Banks**

American - 1950's / 1970's. Included are a Worcester Federal Savings, a First National Bank of Des Plaines, a Merchants Bank (Allentown, PA) and a Port Angeles Savings & Loan Assn. Very Fine to Pristine Condition. Estimate: 100.00 - 150.00

**23 The Dollar Savings Bank**

A. C. Rehberger Co. Chicago, IL - 1930's. It retains a circular hole on top of the bank to deposit paper currency. Excellent Condition. Estimate: 150.00 - 225.00

**29 Two Banthrico Banks**

Chicago, IL. 1960's to 1970's. Included are an Alaska Mutual Savings Bank and a Lamar Life Insurance Co. Building. Excellent Condition. Estimate: 75.00 - 125.00

**24 Arlington Heights Federal Savings Bank**

A. C. Rehberger & Co. Chicago, IL - 1940's. An impressive, large scaled and heavy bank. Near Mint Condition. Estimate: 150.00 - 225.00

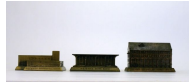


Toy Stories - Cyber 16 3/25/2022

LARGER/ ADDITIONAL IMAGES ON LIVEAUCTIONEERS.COM

LOT #**30 Three Banthrico Banks**

Chicago, IL. 1960's. Included are a Beckley National Bank, a Heights State Bank and an Old Second National Bank of Aurora, IL. Very Fine to Excellent Condition Estimate: 75.00 - 125.00

**LOT #****35 Three Banthrico Building Banks**

Chicago, IL. 1960's to 1970's. Included are Worcester Federal Savings Clock, ASI Inc. Hartford Convention (lacks trap) and a Worcester Federal Savings Bank Building. Excellent or Better Condition. Estimate: 75.00 - 125.00

**31 Two Banthrico Banks**

Chicago, IL. 1950's to 1960's. Included are a Miami Beach Federal Savings and a Bankers Trust Company. Very Fine to Excellent Condition. Estimate: 100.00 - 150.00

**36 Two Souvenir Banks**

American - 1960's. Made of aluminum or a similar alloy. Included are the "Wurzberg" Department Store of Grand Rapids, MI and a Community Savings Bank of Compton. Very Fine Condition. Estimate: 75.00 - 125.00

**32 Three Banthrico Banks**

Chicago, IL. 1960's. Included are a State Bank of Clearing, a First Federal Savings & Loan Assn. of Wade Hampton (Lacks trap mechanism) and a Beckley National Bank. Very Fine to Pristine. Estimate: 75.00 - 125.00

**37 Three Banthrico Banks**

Chicago, IL. 1960's to 1970's. Included are an Alexandria National Bank, a Newport Balboa Savings and Loan and a 1st National Bank (Sterling, IL). Excellent or Better Condition. Estimate: 75.00 - 125.00

**33 Three Banthrico Building Banks**

Chicago IL. 1960's to 1970's. Included are The Lynchburg National Bank and Trust, a Syracuse Savings Bank and an American Fletcher National Bank & Trust Company (Indianapolis). Very Fine to Excellent Condition. Estimate: 50.00 - 75.00

**38 Three Banthrico Banks**

Chicago, IL. 1970's. Included are the U. S. Capitol, a Gold Dome Bank of Buffalo and Rutherford County, Tennessee Courthouse. Excellent Condition. Estimate: 75.00 - 125.00

**34 Five Banthrico Building Banks**

Chicago, IL. 1970's. Included are Two Banks shaped like old west banks, The Security Bank and Trust (Lawton, OK), 1770 Trout Hall (Allentown, PA) and the Fort Wayne National Bank. Pristine Condition. Estimate: 60.00 - 90.00

**39 Two Banthrico Banks**

Chicago, IL. 1970's. Included are Ohio Electric Railway and a Hobart Federal Savings. Excellent Condition. Estimate: 40.00 - 60.00

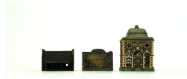


Toy Stories - Cyber 16 3/25/2022

LARGER/ ADDITIONAL IMAGES ON LIVEAUCTIONEERS.COM

LOT #**40 Three Modern Banks**

American - 1960's to 1980's. A Lincoln Coin Bank (Aluminum) an Old Shawneetown First Bank (Cast Iron) and a Roof Bank Reproduction (Cast Iron). Excellent Condition. Estimate: 40.00 - 60.00

**41 Two Tin Banks**

American / English - 1930's. Included are a Diamond 760 Motor Oil Bank and a Sentry ("To Guard Your Money"). Excellent Condition. Estimate: 75.00 - 125.00

**42 Three Cast Iron Banks**

American - 1920's. Included are two Two Story House Banks and a Three Story Mosque. Good Condition. Estimate: 40.00 - 60.00

**43 Assorted City Building Banks**

American - 1920's. Five banks in total. Very Fine or Better Condition. Estimate: 100.00 - 150.00

**44 Three Domed Iron Banks**

A. C. Williams. Ravenna, Ohio - 1920's. 4.625" to 4.875" Tall. Two appear to be very old, good looking repaints. Fine Condition. Estimate: 75.00 - 125.00

**LOT #****45 High Rise Building Iron Bank**

Kenton Hardware. Kenton, Ohio - 1920's. 5.75" Tall. Very Fine Condition. Estimate: 125.00 - 175.00

**46 Three Iron Building Banks**

American - 1880's. Included are two One Story House Banks and a Medium Crown Bank. Fine to Very Fine Condition. Estimate: 125.00 - 175.00

**47 Three Building Iron Banks**

American - 1880 to 1910. Included are two 1876 Banks (one repainted with new screw) and a Two Story House. Fine Overall Condition. Estimate: 75.00 - 125.00

**48 Small Colonial House / One Car Garage Iron Banks**

A. C. Williams - 1920's. Fine to Very Fine Condition. Estimate: 100.00 - 150.00

**49 Two Mosque Iron Banks**

American - 1910. One with a twist pin and the other a screw and nut. Excellent Condition. Estimate: 60.00 - 90.00

**50 Log Cabin - Chimney Left Iron Bank**

Kyser & Rex. Philadelphia - 1890's. Very Good Condition. Estimate: 75.00 - 125.00



Toy Stories - Cyber 16 3/25/2022

LARGER/ ADDITIONAL IMAGES ON LIVEAUCTIONEERS.COM

LOT #**51 Warsaw Mosque Bank**

Silvered Lead. European - 1920's - 3.25"
L. Excellent Condition. Estimate: 75.00 -
125.00

**LOT #****57 Building with Basement Bank - Ohio Foundry**

Ohio Foundry. Cleveland, Ohio - 1948 -
4.5" Tall. This is a brightly painted, post
WWII version of the bank. Excellent Plus
Condition. No Trap. Estimate: 125.00 -
175.00

**52 Den Danske Sparkasse Bank**

Danish - 1920's. The bank was founded in
Copenhagen in 1871. These banks were
given to customers to encourage savings.
Those savings to be deposited to the bank.
Pristine Condition. Estimate: 100.00 -
150.00

**58 Four Tower Bank - Ohio Foundry**

Ohio Foundry. Cleveland, Ohio - 1948.
This is a porcelain, post WWII, version of
the bank. Near Mint Condition. Estimate:
125.00 - 175.00

**53 Two Caisse Banks**

French - 1920's to 1930's. 5" to 6.5" Tall.
The shorter made of aluminum and the
taller of brass. Excellent Condition.
Estimate: 175.00 - 250.00

**59 Two Tin Banks**

European - 1920's to 1930's. One mimics a
collection tin and the other a Hansel &
Gretel House. Good to Excellent
Condition. Estimate: 60.00 - 90.00

**54 Caisse Iron Bank - Rare**

French - 1920's - 6" Tall. A very scarce
cast iron version. Fine Condition.
Estimate: 200.00 - 300.00

**60 Two Iron Banks**

American - 1910's. Both examples were
repainted years ago and have a wonderful
look. Estimate: 125.00 - 175.00

**55 Pagoda Iron Bank - Scarce**

English - 1905 - 5" Tall. A scarce early
English bank. Very Fine Condition.
Estimate: 175.00 - 250.00

**61 Bethel College Library Iron Bank**

American - 1930's. Excellent Condition.
Estimate: 75.00 - 125.00

**56 Unusual Cupola Bank - French**

French - 1890's. 6" Tall. This unusual
Cupola was found in Europe many years
ago. It is made of brass or a similar alloy.
A chance to add a unique bank to the
collection. Good Condition. Estimate:
175.00 - 250.00

**62 Save & Smile Iron Bank**

English - 1915. This is a scarce color
variation in copper paint with red, white
and blue highlights. Estimate: 150.00 -
225.00



Toy Stories - Cyber 16 3/25/2022

LARGER/ ADDITIONAL IMAGES ON LIVEAUCTIONEERS.COM

LOT #

63 "Get Out of Kuwait" Cap Gun

Reynolds Toys - 1991. Made for the first war with Iraq. Here you have Uncle Sam kicking Saddam Hussein out of Kuwait. Pristine Condition. Estimate: 75.00 - 125.00



LOT #

68 "Uncle Louie" Bank

Designed by A. J. Koveleski. Reynolds Toys - 1980's. An eccentric bank designed and modelled after famed Toy/Bank collector A. J. Koveleski of Pennsylvania, a.k.a. "Uncle Louie". Mint Condition. Estimate: 50.00 - 75.00



64 The Toy Doctor Bank

Reynolds Toys - 1980. Made for the SBCCA in 1980. Near Mint Condition. Estimate: 60.00 - 90.00



69 Three Semi-Mechanical Banks

Reynolds Toys - 1980's / 1990's. Included are "The Blackbeard" Bank, a Dog Scratching and the Pirate Bank. Near Mint to Mint Condition. Estimate: 150.00 - 225.00



65 Two SBCCA Convention Banks

Reynolds Toys - 1981 / 1995. One a forlorn dog on carpet for the 1981 Convention and one a Bale of Cotton for the 1995 Convention in Greenville, SC. Pristine Condition. Estimate: 50.00 - 75.00



70 Two Modern Mechanical Banks

Reynolds Toys - 1970's to 1980's. Included are the Suitcase Bank from 1979. Rest a coin in the slot on top. Press the lever, the suitcase opens revealing a Harlequin Bank and the coin drops in. The second, The Train Man Bank. Place a coin in the slot, pull his arm backwards and the coin drops in. Pristine Condition. Estimate: 150.00 - 225.00



66 SBCCA 1980 Convention Bank

Reynolds Toys - 1980. Made for the SBCCA Convention held in Denver, PA in 1980. Mint Condition. Estimate: 50.00 - 75.00



71 Boat Bank

Reynolds Toys - 1990's. Modelled after the comic characters Alphonse and Gaston. Place a coin in the coin slot between Alphonse's legs, then pull the lever out, the boat rocks, depositing the coin between Gaston's legs. Mint Condition. Estimate: 150.00 - 250.00



67 St. Nicholas Bank

Reynolds Toys - 1990's. This is a semi-mechanical bank. Raise the mistletoe above his head and an Elf comes up with a tray. Place your coin on the tray and depress the mistletoe, he goes back into Santa's Sack and deposits your coin. Mint Condition. Estimate: 75.00 - 125.00



Toy Stories - Cyber 16 3/25/2022

LARGER/ ADDITIONAL IMAGES ON LIVEAUCTIONEERS.COM

LOT #**72 Chesters Fishin Hole Bank**

Reynolds Toys - 1980's. Here we have Chester Gump, of comic strip fame, fishing at his favorite pond. Place a coin on the rock, pull the frog out, causing Chester to pull his fish out, depositing your coin.

Mint Condition. Estimate: 150.00 - 250.00

**73 Happy Hooligan Bank**

Reynolds Toys - 1980's. Place a coin in Happy Hooligan's open Shoe Shine Box. Turn the lever and the coin drops in and he moves slightly. Mint Condition. Estimate: 150.00 - 250.00

**74 Gloomy Gus Bank**

Reynolds Toys - 1990's. Place a coin in his hand and pull the lever out, he leans right depositing coins to the money bags. Mint Condition. Estimate: 150.00 - 250.00

**75 Comedy Bank**

Reynolds Toys - 1980's. Place a coin in the money satchel and press the lever in causing Punch & Judy to appear to fight and depositing the coin. Mint Condition. Estimate: 150.00 - 250.00

**76 Three Blind Mice Bank**

Reynolds Toys - 1990's. Place a coin in the Papa Mouse's hand, pull the lever out causing the desk to open and depositing the coin. Mint Condition. Estimate: 150.00 - 250.00

**LOT #****77 Reynolds Foundry Bank**

Reynolds Toys - 1970's. This is a very scarce and early Charlie Reynolds mechanical bank. Place a coin in the slot up front and push the activating lever backwards. Happy Hooligan moves forward as if preparing to pour and the coin drops in. Only 15 examples were made. Near Mint Condition. Estimate: 500.00 - 700.00

**78 Simple Simon Bank**

Reynolds Toys - 1980's. Place a coin in the boys hand and pull the lever back fast, the coin shoots across into the Photographer's camera and down into the bank. Mint Condition. Estimate: 200.00 - 300.00

**79 The Kids Prank Bank**

Reynolds Toys - 1980's. Place a coin between his book and face and pull the lever back, he falls backwards and the coin is deposited to the well. Mint Condition. Estimate: 200.00 - 300.00

**80 The Kid Savings Bank**

Reynolds Toys - 1980's. Place a coin between the Kid's horns and depress the activating lever quickly and the coin is deposited to the barrel. Mint Condition. Estimate: 200.00 - 300.00

**81 Christmas Tree Bank**

Reynolds Toys - 1980's. Place a coin in Santa's upright hand and pull the lever back. The coin is deposited into the tree. Mint Condition. Estimate: 275.00 - 375.00



Toy Stories - Cyber 16 3/25/2022

LARGER/ ADDITIONAL IMAGES ON LIVEAUCTIONEERS.COM

LOT #**82 Old Woman in the Shoe Bank**

Reynolds Toys - 1980's. Place a coin on her tray and depress the operating lever, she goes into the shoe with the coin. Mint Condition. Estimate: 100.00 - 150.00

**LOT #****86 Buffalo's Revenge Bank**

Reynolds Toys - 1990. Made for the MBCA Convention held in Buffalo, New York in 1990. Place a coin in the aperture on the left side of the bank. Set the Buffalo in place and release the lever. The Buffalo hits the Native American over, striking the coin into the bank. Near Mint Condition. Estimate: 200.00 - 300.00

**83 Friars Favorite Bank**

Reynolds Toys - 1997. Made for the 40th Anniversary of the MBCA. Set the top plate in place, then place a coin on the silver circular plate and depress the lever. The top of the desk flips up and a Freedman's Bank is revealed. That friar has great taste! Mint Condition. Estimate: 100.00 - 150.00

**87 Williamsburg Bank**

Reynolds Toys - Dated 1991. Made for the MBCA's 1991 Convention held in Williamsburg, VA and hosted by Charlie & Judy Reynolds. Place a coin on his tray and depress the lever; the momentum deposits the coin into the barrel. Mint Condition. Estimate: 200.00 - 300.00

**84 The Lawyers Bank**

Reynolds Toys - Dated 2001. Made for the 2001 Annual Convention held in Washington D. C. and hosted by Max Berry. Presently not functioning, but it appears to be complete. Mint Condition. Needs adjusting to work. Estimate: 250.00 - 325.00

**88 Norway Bank**

Reynolds Toys - 1994. Made to commemorate the Winter Olympic Games of 1994 that were held in Lillehammer, Norway. Set the flames down in the cauldron, depress the lever and the skier comes down, the flames pop up and your coin deposited. Mint Condition. Estimate: 200.00 - 300.00

**85 Wall Street Bank**

Reynolds Toys - Dated 1998. Made for the annual MBCA Convention held on Long Island and hosted by Leon & Angela Weiss and Deborah Davidson. Place a coin on his table and depress the lever at rear. He gavel the opening of the markets and the coin falls to either the "Bull" or the "Bear". Mint Condition. Estimate: 350.00 - 450.00

**89 The Auto Giant Bank**

Reynolds Toys - 1987. Made for the 30th Annual MBCA Convention held in Detroit and hosted by Dr. Greg Zemenick. Set the Auto in its locked position and place a coin halfway into the slot. Depress the lever and the Giant lifts the auto up depositing your coin. Mint Condition. Estimate: 300.00 - 400.00



Toy Stories - Cyber 16 3/25/2022

LARGER/ ADDITIONAL IMAGES ON LIVEAUCTIONEERS.COM

LOT #**90 Hyakutake / The Comet Bank**

Reynolds Toys - Dated 1996. Made to commemorate the comet that was visible in 1996. Set the comet in place and put a coin in its slot. Depress the lever and the comet sails past earth and deposits your coin. Mint Condition. Estimate: 150.00 - 200.00

**91 De Bug Bank**

Reynolds Toys - 1999. Made for the approach of the turning of the millennial and the feared Y2K computer bug. Place a coin in the slot atop the bank, depress the mouse activation lever, the bug flips over and your coin is deposited. Mint Condition. Estimate: 150.00 - 250.00

**92 J. & E. Stevens Foundry Bank**

Reynolds Toys - 1995. Made for the 1995 MBCA Convention in Hartford, CT. Place a coin in front of the pouring station, pull out the barrel to activate. A teddy and the bear bank comes out the left side of the bank. Mint Condition. Estimate: 400.00 - 600.00

**93 Quarter Century Bank**

Reynolds Toys - 1982. This is one of the most elaborate and sought after banks that Charlie Reynolds ever produced. Made for the 25th Anniversary of the MBCA Club. Place a coin on his pan and depress the lever, he deposits it into the Baby Elephant. Pristine Condition. Estimate: 750.00 - 950.00

**LOT #****94 Save the Girl Bank**

Reynolds Toys - 1980's. Another impressive Charlie Reynolds bank. Set the girl in place, wind the crank and the fireman ascends the ladder and rescues her as your coin is deposited. Pristine Condition. Estimate: 600.00 - 800.00

**95 Betsy Ross Bank**

L & W Inc. - 1976. Made to commemorate the American Bicentennial. Designed by Al and Deborah Davidson. Excellent Overall. Some rust on base and rear plate, not working. Estimate: 175.00 - 225.00

**96 Uncle Sam & Arab Bank**

John Wright Co. Pennsylvania - 1975. Made at the time of the oil embargo between OPEC nations and the United States. This Sheikh has Uncle Sam over the barrel with oil prices. Pristine Condition. Estimate: 300.00 - 400.00

**97 Campaign 88 Bank**

Reynolds Toys - 1988. Made for the 1988 Convention in Poughkeepsie, NY. The 1988 election followed six weeks later. Here, Jesse Jackson holds a tray upon which the coin is either cast for Bush or Dukakis. Pristine Condition. Estimate: 600.00 - 800.00

**98 92 Vote Bank**

Reynolds Toys - 1992. Made for the 1992 Presidential Election. Place your coin in the top slot and it zig zags down the track depositing your coin, a "Ross Perot" pops up. Pristine Condition. Works sporadically. Estimate: 400.00 - 600.00



Toy Stories - Cyber 16 3/25/2022

LARGER/ ADDITIONAL IMAGES ON LIVEAUCTIONEERS.COM

LOT #

99 96 Political Wish Bank

Reynolds Toys - 1996. Made for the 1996 Presidential Race between Bill Clinton, Bob Dole and Ross Perot. Place a coin in the wishbone slot, press the Donkey head in for Bill Clinton and the Elephant head in for Bob Dole. Mint Condition. Estimate: 375.00 - 500.00



100 Decision 2000 Bank

Reynolds Toys - 2000. Made for the 2000 Presidential Race between George Bush and Al Gore. Place a coin on top of the ballot box and move the lever right, the coin drops in and the political figures move. Pristine Condition. Estimate: 350.00 - 450.00



101 Tug-Over-War in 2004 Bank

Reynolds Toys - 2004. Made for the Presidential election between George Bush and John Kerry. Place a coin in the Ballot Box slot and tug it either way to your fancy and the coin drops in! Original paper flag is detached. Mint Overall. Estimate: 350.00 - 450.00



102 Columbia Bank

Reynolds Toys - 1984. Made for the MBCA Convention of 1984. Set the flag down in locked position and place a penny in the slot. Depress the lever and Lady Columbia raises the flag, depositing the coin. Pristine Condition. Estimate: 250.00 - 350.00



LOT #

103 Teddy and the Bear Bank

Book of Knowledge Example. John Wright - Pennsylvania - 1980's. Pristine Condition. Estimate: 50.00 - 100.00



104 Reaganomics Bank

Probably Chinese - 1980's. Near Mint Condition. Estimate: 40.00 - 60.00



105 Toonerville Trolley Bank

Reynolds Toys - 1980's/90's. Near Mint Condition. Estimate: 75.00 - 125.00



106 North Wind Bank

Reynolds Toys - 1980's. An ingenious bank whereby the coin is shot into the North Winds Mouth. Near Mint Condition. Estimate: 150.00 - 200.00



107 Singer Jukebox Bank

Reynolds Toys - 1990's. Famed collector Ed Singer and his wife Naomi are the inspiration for this bank. Place a coin in the slot. Press the lever and young Ed goes forward to make a music selection as your coin is deposited. Mint Condition. Estimate: 175.00 - 225.00



108 Canada / America Bank

Reynolds Toys - 1985. Made for the 1985 MBCA Convention held in Ottawa, Canada. Place a coin in the slot and turn the lever. The coin drops in the whirligig and the arms turn. Pristine Condition. Whirligig arms presently disconnected. Estimate: 275.00 - 375.00



Toy Stories - Cyber 16 3/25/2022

LARGER/ ADDITIONAL IMAGES ON LIVEAUCTIONEERS.COM

LOT #

109 Assorted Souvenirs

Many Makers - 1950's to 1980's. One Eiffel Tower Ashtray and one Eiffel Tower mounted to a stone base. A Bamberg Cathedral and San Marco Basilica. Seven in total. Very Fine or Better Condition. Estimate: 75.00 - 125.00



110 Large Group of Washington D. C. Souvenirs

11 Items. American / Japanese - 1940's to 1970's. Included are Salt & Pepper Shaker, Capital Bank and many souvenirs. Excellent or Better Condition. Estimate: 125.00 - 175.00



111 Large Group of Parisian Souvenirs

7 Items. Various Makers - 1930's to 1970's. The Notre Dame Bookends made of cast iron and three mounted to stone bases. Fine to Pristine Condition. Estimate: 125.00 - 175.00



112 Group of N. Y. City Souvenirs

8 Items. Mostly American - 1950's to 1970's. All Chrysler Building and Statues of Liberty. One Statue of Liberty with broken arm, but we have the piece. Very Fine or Better Condition. Estimate: 75.00 - 125.00



113 Group of European Souvenirs

8 Items. Various Makers - 1940's to 1980's. Included: Sacre Coeur, Koln Cathedral, Burg Hohenzollern, Westminster Abbey, Schloss Heidelberg Ashtray, the Colosseum, Barcelona Cathedral and the Vatican. Very Fine or Better Condition. Estimate: 125.00 - 175.00



LOT #

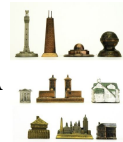
114 Group of Global Souvenirs

9 Items. Various Makers - 1940's to 1980's. Included are two Tower Bridges, Parliament, Big Ben, Reading Pagoda Bank, a Made in Occupied Japan Temple, Berlin Tower, Florence Tower and a Castle from Sevilla on Onyx Base. Very Fine or Better Condition. Estimate: 100.00 - 150.00



115 Large Group of U. S. Souvenirs

9 Items. Mostly American made - 1930's to 1980's. Included are a Fort Snelling Paperweight, The Baseball Hall of Fame, A Globe Company (Chicago) Paperweight, Boston Skyline, John Hancock Tower, Pilgrim Memorial Monument, The Adler Planetarium, City Gate of St. Augustine and a Green and White Building. Fine or Better Condition. Estimate: 75.00 - 125.00



116 Group of Paperweights and Others

Most American - 1930's to 1980's. Two Century of Progress Haroline Thermometers, Sydney Opera House, Winston - Salem N. C. Coffee Pot, Fort Dearborn 1833 - 1933, Cleveland Automatics Drill Press in Original Box and a Fairbanks-Morse Diesel Engine. Very Fine or Better Condition. Estimate: 150.00 - 200.00



117 Group of Tower Souvenirs

9 Items. American - 1950's to 1970's. Included are a Kings Island Tower, San Jacinto Tower, Seattle Space Needle, Three Sunspheres of Knoxville, TN, The Singing Tower (FL), Sun Tower and an Oil Well. Very Fine or Better Condition. Estimate: 100.00 - 150.00



Toy Stories - Cyber 16 3/25/2022

LARGER/ ADDITIONAL IMAGES ON LIVEAUCTIONEERS.COM

LOT #

118 Group of American Souvenirs

6 Items. American - 1920's to 1960's. Included are an Ohio State Stadium Ashtray, a Peterborough Cathedral Bookend, Northern Trust (Seattle) Building, a General Motors Building, a Kraft-Phoenix Cheese Company Building (dated 1938) and "Old Main" from Pennsylvania State College. Very Fine or Better Condition. Estimate: 175.00 - 225.00



LOT #

123 Bureaux Caisse Type Bank

French - 1930's - 6.75" Tall. We have never seen this exact bank before. It is made of an aluminum alloy. Pristine Condition. Estimate: 175.00 - 225.00



119 Notre Dame Inkwell

French - 1930's - 8" Long. In truly wonderful patina and condition. No pen accompanies this lot. Excellent Plus Condition. Estimate: 75.00 - 125.00



124 Two Still Banks

American - 1930's / 1940's. One is a Save for a Home Bank and the other the Little Brown Church. Pristine Condition. Estimate: 75.00 - 125.00



120 First National Bank and Trust

Of Oneida County, New York. Ashtray / Match Holder. American - 1930's - 6.5" Diameter. Excellent Condition. Estimate: 75.00 - 125.00



125 Three Building Banks

American 1970's / 1980's. Included are two Log Cabins and an Angelica, NY Courthouse. Excellent or Better Condition. Estimate: 50.00 - 100.00



121 Ashram Monument

Unknown Maker - 1920's - 4" Square Base. Made of brass or a similar alloy. Very Fine Condition. Estimate: 75.00 - 125.00



126 Two Aluminum Banks

American - Dated 1989 & 2000. Included are The Gettysburg National Bank (1989) and the Franklin School of Wadsworth, Ohio (2000). Pristine Condition. Estimate: 75.00 - 125.00



122 Fare Collector Bank

Probably English - 1890 - 4.5" Wide. This is a folksy, handmade still bank. Very Fine Condition. Estimate: 75.00 - 125.00



127 Three Modern Still Banks

American - 1950's to 1980's. Included are a Harleysville Bank (1989), a Covered Bridge (1960's) and a Amish Barn (1950's). Excellent or Better Condition. Estimate: 75.00 - 125.00



Toy Stories - Cyber 16 3/25/2022

LARGER/ ADDITIONAL IMAGES ON LIVEAUCTIONEERS.COM

LOT #

128 Two Modern Still Banks

American - 1970's to 1980's. Included are a Steeple Bank Building and a John Wrights Foundry Bank. Excellent / Pristine Condition. Estimate: 50.00 - 75.00



LOT #

134 Two United Nations / Rockefeller Center Souvenirs

American - 1950's to 1960's. 3.25" to 4.75" Tall. The silver UN Building is a still bank. The other two are souvenirs. Very Fine or Better Condition. Estimate: 100.00 - 150.00



129 Two Modern Still Banks

American - 1960's / 1970's. Included are an "Old Colony Church" and a Double Entry. Pristine Condition. Estimate: 75.00 - 125.00



135 Souvenir Towers

4 Items. American - 1950's to 1980's. 3.25" to 5.25" Tall. Included are two Singing Towers (one a thermometer), a Lipstick Building (1986) and a Sears Tower (Chicago). Very Fine or Better Condition. Estimate: 60.00 - 90.00



130 Two Lynchburg Foundry Banks

Lynchburg Foundry - 1976. Both in wonderful condition. Excellent Condition. Estimate: 125.00 - 175.00



136 Two N. Y. City Souvenirs

American - 1940's / 1960's. A calendar Cityscape (Statue of Liberty missing her torch) and a Pan Am Building 6" Ruler (Brass). Fine Overall Condition. Estimate: 50.00 - 75.00



131 Geometric Safe

J. & E. Stevens Company. Cromwell, Connecticut - 1890's. 5.5" Tall. A very rare safe bank. A tiny piece of iron missing near the keylock opening. Very Good Overall. Estimate: 150.00 - 200.00



137 Two Observatory Buildings

American - 1940's / 1970's. One is the Griffith Observatory of Los Angeles that opened in 1935. The other is a mystery to us! Excellent Condition. Estimate: 75.00 - 125.00



132 Three U. S. Capitol Souvenirs

American - 1930's - 3.75" to 4.5" Long. Included are a Capitol Building with Masonic Hat, a Stamp / Jewelry Box and one other. Fine or Better Condition. Estimate: 150.00 - 200.00



138 Metropolitan Life Insurance Inkwell

American - 1920 - 5.25" Tall. Excellent Condition. Estimate: 125.00 - 175.00



133 Chrysler & Empire State Buildings

American - 1930's to 1940's. 4" to 6.75" Tall. Included are a Chrysler Souvenir, Empire State Building Souvenir with Pencil Sharpener, a Souvenir Cigarette Lights of the Chrysler Building and a souvenir with thermometer. Fine or Better Condition. Estimate: 175.00 - 225.00



Toy Stories - Cyber 16 3/25/2022

LARGER/ ADDITIONAL IMAGES ON LIVEAUCTIONEERS.COM

LOT #**139 Zembo Mosque - Harrisburg, PA**

American - 1940's - 4.625" Long. Made of lead, missing its felt bottom. Excellent Condition. Estimate: 50.00 - 75.00

**LOT #****144 Three Modern Still Banks**

American - 1970's to 1980's. An Independence Hall, a Credit Union and Continental Currency Drum. Pristine Condition. Estimate: 40.00 - 60.00

**140 Three European Souvenirs**

European made - 1930's to 1950's - 3" to 6.25" Long. Included are the Duomo (Florence), Il Dynamo (Milan) and an Eiffel Tower Thermometer (6.25" Tall). Very Fine or Better Condition. Estimate: 150.00 - 200.00

**145 Two Modern Banks**

Milt Lenowitz Company. American - 1950's. 3.75" / 5.75" Tall. One is the Forty Four State Bank of Pennsylvania. This is marked Milt Lenowitz and has a keylock trap. The other for the Pilot life Insurance Company, founded in 1951. Near Mint Condition. Estimate: 100.00 - 150.00

**141 Various Religious Building Souvenirs**

6 Items. Assorted Makers - 1940's to 1980's. Included are two mosques, two Notre Dame, a St. Familia-Gaud and a Japanese Pagoda. Very Fine or Better Condition. Estimate: 75.00 - 125.00

**146 Two Banthrico Banks**

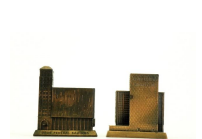
Chicago, IL. 1960's / 1980's. One is for the Hoosier State Bank of Hammond, Indiana and the other for the Rath Employees Credit Union. Pristine Overall. One missing baseplate. Estimate: 30.00 - 50.00

**142 Arabic Mosque**

Probably European - 1930's - 4.75" Tall. Made of brass and in great detail. A tiny 1/4" crack in the base. Excellent Overall Condition. Estimate: 75.00 - 125.00

**147 Two Banthrico Building Banks**

Chicago, IL. 1950's / 1960's. One of the First New Haven National Bank and the other Dade Federal Savings & Loan. Excellent Condition. Estimate: 75.00 - 125.00

**143 Three Banthrico Banks**

Chicago, IL circa 1950's / 1960's. Included are Security National Bank (Joplin, Mo.), Chesterton Rural Loan & Savings Assn. and a Wichita Federal Savings & Loan Assn. Very Fine or Better Condition. Estimate: 75.00 - 125.00

**148 Three Souvenir Buildings**

American - 1970's - 2001. 6" to 9" Tall. Made of various composites or metals. Included is the Transcontinental Pyramid of San Francisco, a Chicago Board of Trade and the N. Y. City Municipal Building. Pristine Condition. Estimate: 125.00 - 175.00



Toy Stories - Cyber 16 3/25/2022

LARGER/ ADDITIONAL IMAGES ON LIVEAUCTIONEERS.COM

LOT #

149 Three Souvenir Buildings

American - 1990's / 2000's. 4.25" - 5.25" Tall. Included are a Triangle Shirtwaist Factory Building (a Sad Day in American History), 540 Madison Ave and the Northern Life Company of Seattle. Near Mint Condition. Estimate: 100.00 - 150.00



LOT #

154 Lot of Souvenirs

American - 1934 - 2008. Included is a Century of Progress Plaque, a N. Y. World's Fair "Peace-through Understanding" Plaque and a diorama of Citi Field. Pristine Condition. Estimate: 150.00 - 200.00



150 Three Harry Macklowe Development Items

American - 2010's. Three for 432 Park Ave and one for 540 Madison Avenue. Mint with Box. Estimate: 75.00 - 125.00



155 Punch & Judy - Small Letters - Iron Bank

Shepard Hardware. Buffalo, New York - 1880's. Very Good Condition. Estimate: 400.00 - 600.00



151 Two Harry Macklowe Development Souvenirs

American - 1980's / 2000's. One is a paperweight of the actual granite core removed from the East River Sea Wall and the other is the San Remo Apartments owned by the Macklowe Company. Estimate: 100.00 - 150.00



156 Novelty Mechanical Iron Bank

J. & E. Stevens Company. Cromwell, Connecticut - 1870's. Fine Condition. Estimate: 350.00 - 450.00



152 Two Tower Souvenirs with Original Boxes

Asian - 2000's. One of the Oriental TV Tower in Shanghai, China and the other Buij Tower in Dubai. Mint with Boxes. Estimate: 100.00 - 150.00



157 Eagle & Eaglets Iron Mechanical Bank

J. & E. Stevens Company. Cromwell, Connecticut - 1880's. Very Good Condition. Estimate: 350.00 - 450.00



153 Assorted Souvenirs

American - 1930's to 1970's. Included are a Liberty Bell, Terminal Building (Cleveland), a Fort Snelling Paperweight, a Seattle Space Needle and a Capitol Records Building (Antenna must be reattached). Excellent or Better Condition. Estimate: 75.00 - 125.00



158 Jonah and the Whale Iron Bank

Shepard Hardware. Buffalo, New York - 1890's. The bank in fine overall, good working condition. The white paint on the top level of the boat is repainted. Estimate: 550.00 - 750.00



159 Paddy and His Pig Iron Bank

J. & E. Stevens Company. Cromwell, Connecticut - 1890's. Significant paint restoration. Estimate: 350.00 - 450.00



Toy Stories - Cyber 16 3/25/2022

LARGER/ ADDITIONAL IMAGES ON LIVEAUCTIONEERS.COM

LOT #

160 Hansom Cab Iron Toy

Pratt & Letchworth. Buffalo, NY - 1890 - 12.75" Long. The figure is a newer replacement. Very Good Overall Condition. Estimate: 300.00 - 400.00



LOT #

165 Punch & Judy - Small Letters - Iron Bank

Shepard Hardware Company. Buffalo, New York - 1890's. Good Condition. Estimate: 350.00 - 450.00



161 I Always Did Spise a Mule Iron Bank

Yellow Base Bench Version. J. & E. Stevens Company. Cromwell, Connecticut - 1890's. The rear legs of the mule are repainted. The bank works well. Good Overall Condition. Estimate: 275.00 - 375.00



166 The Tennis Bank

John Wright Company. Pennsylvania - 1975. This bank is a depiction of the famed grudge match between Billie Jean King and Bobby Riggs that took place September 20, 1973. Billy Jean King slaughtered him. Quite scarce, desirable and works well. Excellent Plus Condition. Estimate: 500.00 - 700.00



162 Tammany Iron Mechanical Bank

J. & E. Stevens Company. Cromwell, Connecticut - 1870's. Fine Condition. Estimate: 275.00 - 375.00



167 Rooster Iron Mechanical Bank

Kyser & Rex Company. Philadelphia, Pennsylvania 1880's. Excellent Condition. Estimate: 550.00 - 750.00



163 Butting Buffalo Iron Mechanical Bank

Kyser & Rex. Philadelphia, Pennsylvania - 1890. This is a scarce and very desirable bank. Overall in Very Good Condition with a replaced racoon and coin trap. It works well. Estimate: 1,000.00 - 1,500.00



168 Pelican Bank - Man Thumbs Nose

Trenton Lock & Hardware Company. Trenton, New Jersey - 1880's. A scarce bank made in the late 19th Century. Depress your coin into the aperture and the beak pops up, revealing a man thumbing his nose. Fine Condition. Replaced screws. Estimate: 900.00 - 1,200.00



164 Bad Accident Iron Mechanical Bank

J. & E. Stevens Company. Cromwell, Connecticut - 1890's. Overall in good condition, however, the yellow cart is repainted and the boy figure is a modern replacement. Estimate: 300.00 - 400.00



169 Cowboy on Horse Bank

Japanese - 1950's. The cowboy's hat is present, but loose. Fine Condition. Estimate: 75.00 - 125.00



Toy Stories - Cyber 16 3/25/2022

LARGER/ ADDITIONAL IMAGES ON LIVEAUCTIONEERS.COM

LOT #**170 Jolly N. Iron Bank**

Shepard Hardware Company. Buffalo, New York - 1890's. Fine Condition. Estimate: 350.00 - 450.00

**LOT #****176 Girl in Victorian Chair Iron Bank**

W. S. Reed Company. Leominster, MA - 1880's. This is a wonderful condition early bank. It is in all original good working condition. Fine Condition. Estimate: 2,500.00 - 3,500.00

**171 Elephant with Howdah Iron Bank**

Unknown Maker. American - 1880's. The bank is in Excellent Paint Condition, but presently not working. It appears to have a minor repair. Estimate: 350.00 - 450.00

**177 Hall's Excelsior Blue - Iron Bank**

J. & E. Stevens Company. Cromwell, Connecticut - 1870's. Very Fine Condition. Estimate: 500.00 - 700.00

**172 Owl Turns Head - Rare White Owl**

J. & E. Stevens Company. Cromwell, Connecticut - 1880's. This is the very scarce version with a solid white painted owl. Maybe 1 in 200 were painted this way. Very Good Condition. Estimate: 1,500.00 - 2,000.00

**178 Boy on Trapeze Iron Bank**

J. Barton Smith. Philadelphia - 1890's. A classic, brightly painted mechanical bank. Quarters or 50 cent pieces turn him over, depositing the coin. Very Fine Condition. Estimate: 1,000.00 - 1,500.00

**173 Made in Canada - Elephant - Iron Bank**

Canadian - 1970's. This is a really rare Canadian made mechanical bank. Pristine Condition. Estimate: 1,000.00 - 1,500.00

**179 Stump Speaker Iron Mechanical Bank**

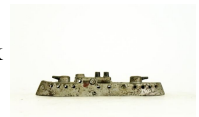
Shepard Hardware Company. Buffalo, New York - 1890's. This example is in very fine condition and works well. Estimate: 1,000.00 - 1,500.00

**174 Billy Goat - Second Casting Iron Bank**

American - 1940's. This is a well done, later casting of the bank. Pristine Condition. Estimate: 700.00 - 900.00

**180 Battleship - Small - Iron Bank**

Kenton Hardware. Kenton, Ohio - 1900 - 8.5" Long. This is a scarce, early still bank by Kenton. It depicts a battleship from America's "Great White Fleet" that sailed from about 1890 to 1920 (Just after WWI). Very Fine Condition. Estimate: 600.00 - 800.00

**175 Elephant with Tusks on Wheels Iron Bank**

American - 1890's - 4.375" Long. This is the rarest of the nodding head Elephant Platform Banks. There are fewer than 15 known examples of this bank. The original platform has been repainted. Excellent Overall Condition. Estimate: 2,500.00 - 3,500.00



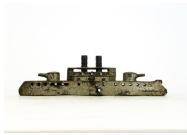
Toy Stories - Cyber 16 3/25/2022

LARGER/ ADDITIONAL IMAGES ON LIVEAUCTIONEERS.COM

LOT #

181 Battleship - Large - Iron Bank

Kenton Hardware. Kenton, Ohio - 1900 - 11" Long. This is the very scarce large version of the "Great White Fleet" Battleship. Very Fine Condition. Estimate: 900.00 - 1,200.00



LOT #

186 Kick Inn Mechanical Bank

American - 1920's. Fine Overall. Missing some paper litho. Estimate: 60.00 - 90.00



182 Telephone Chimes Bell Toy

Watrous Mfg. Co. Connecticut - 1915. This hand held bell toy is in Pristine Plus and great working condition. Estimate: 300.00 - 400.00



187 Structo Toys Fire Truck

Made by Structo Toys. Excellent Condition. Missing one headlight. **Additional Shipping Charge Due To Large Lot Size** Estimate: 125.00 - 175.00



183 Daisy Bell Toy

Gong Bell Mfg. Connecticut - 1890 - 8.5" Long. Overall in Very Fine paint condition, but lacking its rear wheels. Estimate: 375.00 - 500.00



188 Automotive Hook & Ladder Iron Toy

Hubley Mfg. Co. Lancaster, PA - 1915 - 15.5" Long. This toy is in extremely bright paint. Considered a transitional piece, from horse drawn to steam driven. Excellent Plus Condition. Estimate: 350.00 - 450.00



184 Gator Baiter Bell Toy

N. N. Hill Company. Connecticut - 1895 - 9.5" Long. A very scarce and inventive bell toy. As the toy is pulled the gator rushes the boy who scares him away by ringing the bell. Fine Condition. Estimate: 800.00 - 1,000.00



189 Bell Telephone Truck Iron Toy

Hubley Mfg. Co. Lancaster, PA - 1930's - 5.125" Long. Very Fine Condition. Estimate: 125.00 - 175.00



185 Sentry Folk Art Bank

English - 1920 - 8.25" Long and Tall. Pull the Sentry back and place a coin on his head, release him and he deposits the coins to the Sentry Post. Fine Condition. Estimate: 175.00 - 225.00



190 Optical Toy

Marked A. Delalie. French - 1890's - 10.75" Long x 8.75" Tall. A French optical toy made of hand painted glass elements within a wooden frame. Fine Condition. Estimate: 100.00 - 150.00



191 Gibbs See Saw Toy

Gibbs Toy Co. Canton, Ohio - 1920's - 14.75" Tall. The toy works well. Very Fine Condition. Estimate: 90.00 - 120.00



Toy Stories - Cyber 16 3/25/2022

LARGER/ ADDITIONAL IMAGES ON LIVEAUCTIONEERS.COM

LOT #**192 Trolley with Box**

Probably Spanish - 1940's - 10" Long.
This is a friction driven trolley made of tin with its original cardboard box. It works very well. Pristine with Box. Estimate: 125.00 - 175.00

**193 Flatbed Truck - Paya**

H. Paya - Spanish - 1930's - 10" Long.
The toy works well and the bed can lift to simulate dumping. Very Fine Condition. Missing one headlight. Estimate: 90.00 - 120.00

**194 Mack Ice Truck**

Nifty Toys. German - 1920's - 11" Long.
Overall in very good, working condition. Fading to the red (mostly at front). Very Good Condition. Estimate: 100.00 - 150.00

**195 Race Car - Meccano**

Meccano Construction Toys. England - 1930's - 13.5" Long. A colorful and graphic construction assembly by famed maker Meccano of England. It retains its original wrench. Pristine Condition. Estimate: 350.00 - 450.00

**196 Saloon Car - Bing**

Gebruder Bing. Germany - 1920's - 11.5" Long. Overall in good condition. It is missing its radiator cap and two wheels are loose. Estimate: 275.00 - 375.00

**LOT #****197 Prewar "Art Deco" Coupe Tin Toy**

Japanese - 1935 - 12" Long. A scarce and very desirable windup auto. This specimen completely repainted. The toy works well. Estimate: 500.00 - 700.00

**198 Hotchkiss Torpedo Touring Car - JEP**

J. E. P. - Paris - 1920's - 8.5" Long.
Overall in fine good working condition with box lid. Estimate: 350.00 - 450.00

**199 Two Windup Race Cars with Boxes**

Schuco Studio - German - 1960's - 5.5" Long. Two mint and boxed windup toys by Schuco. Estimate: 125.00 - 175.00

**200 Akustico 2002 / Exarnico 4001 - Schuco**

Schuco Studios - 1950's - 5.75" Long.
Both in Pristine or better, great working condition. One with the original box. Estimate: 175.00 - 250.00

**201 Volkswagen Police Car / 1010 Coupe - Schuco**

Schuco Studios - 1950's / 1960's - 4" / 5.75" Long. The Police Car complete with pylons to navigate through. Both work well. Near Mint and Boxed. Estimate: 175.00 - 250.00

**202 Windup Coupse - ZAX**

Zax Mfg. Co. Italian - 1930's - 8" Long.
The toy with great color and silver/gray highlights. It works well, but is missing its front bumper guard. Excellent Condition. Estimate: 125.00 - 175.00



Toy Stories - Cyber 16 3/25/2022

LARGER/ ADDITIONAL IMAGES ON LIVEAUCTIONEERS.COM

LOT #**203 Windup Open Roadster - ZAX**

Zax Mfg. Co. Italian - 1940's - 10.5" Long. The toy is in Excellent Condition, but missing its windscreen. It works well. Estimate: 150.00 - 200.00

**204 Windup Man with Briefcase**

German - 1915 - 8.75" Tall. Made of tin and fabric, he works well. Fine Condition. Estimate: 400.00 - 600.00

**205 Billiard Player Windup Toy**

German - 1920's - 7.5" Long. In great working condition, but lacks his cue ball. Fine Condition. Estimate: 225.00 - 300.00

**206 The Dare Devil - Lehmann**

Ernst Paul Lehmann. German - 1910 - 7.5" Tall. The toy is in good working condition. Very Fine Condition. Estimate: 400.00 - 600.00

**207 Charlie Chaplin - Schuco**

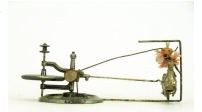
Schuco Mfg. - German - 1920's - 6.5" Tall. This example with a hand painted face is quite scarce. It works well. Very Fine Condition. Estimate: 400.00 - 600.00

**208 Windup Duck**

German - 1920's - 6.75" Long. When the toy is wound, he flaps his wings and makes a gobble noise. One of his wings has been repainted. Fine Overall Condition. Estimate: 125.00 - 175.00

**LOT #****209 Gyroscopic Acrobat Toy**

Probably French - 1890 - 7" Wide. The toy works decently, but needs a minor adjustment to completely circle the track. Made of lead and fabric. Very Fine Condition. Estimate: 200.00 - 300.00

**210 Monkey Nodder - Schuco**

Schuco - 1920's - 8.25" Tall. His tail is used to move his head up and down and side to side. Excellent Condition Estimate: 175.00 - 225.00

**211 Pullman Train with Box**

American - 1930 - 12.5" Long. This pull train marked O. A. C. L. is in Near Mint Condition with the original Box. Estimate: 100.00 - 150.00

**212 Two Funnel Ocean Liner - Arnold**

Made by Arnold. German - 1950's - 18" Long. Pristine Condition. With original box lid. The toy works very well. Estimate: 200.00 - 300.00

**213 Charlie McCarthy & Mortimer Snerd - Marx**

Louis Marx & Co. New York - 1932 - 16" Long. Excellent Condition. The toy is very graphic and works well. Estimate: 375.00 - 500.00

**214 Friction Cadillac Tin Toy**

Japanese - 1950's - 12" Long. Excellent Overall Condition. Missing one bumper guard. Estimate: 175.00 - 225.00



Toy Stories - Cyber 16 3/25/2022

LARGER/ ADDITIONAL IMAGES ON LIVEAUCTIONEERS.COM

LOT #**215 Hospital Train Car - Marklin**

Gauge I. Gebruder Marklin. German - 1910 - 8.5" Long. Professionally Restored. Estimate: 350.00 - 450.00

**LOT #****221 Two Clock Banks**

Time is Money / Save Your Pennies. American - 1910 - 3 3/4" Tall. Very Fine Condition. Estimate: 60.00 - 90.00

**216 Bicycle Balance Toy**

American - 1920's - 10.5" Tall x 8.5" Long. Excellent Condition. Estimate: 100.00 - 150.00

**222 Dancing Minstrels - Converse**

Made by Converse Company. American - 1915 - 9" Tall x 8" Wide. Excellent Condition. This lithographed toy works quite well. Estimate: 375.00 - 500.00

**217 Steam Plant - Marklin**

Gebruder Marklin. German - Late 1930's - 10 1/4" Tall (Base 7 3/4" x 6 3/4"). Pristine Plus Condition. Missing the burner. Estimate: 150.00 - 200.00

**223 Motorcycle and Sidecar Windup Toy**

Marked Q. S. H. Western German - 1965 - 7 1/2" Long. Near Mint Condition. The toy works well. The passenger's head is made of rubber. Estimate: 80.00 - 120.00

**218 Steam Plat - Doll & Cie**

Made by Doll & Cie. German - 1925 - 11 1/2" Tall (Base 9" x 7 3/4"). Very Fine Condition. Retains its burner. Estimate: 175.00 - 225.00

**224 Morse Code Telegrafo**

Made by LA Litografica. Milan, Italy - 1950's. Box 14 1/2" x 6 1/2". Pristine with Original Box. Estimate: 125.00 - 175.00

**219 Young Man and Raccoon Bell Toy**

N. N. Hill Company. Connecticut - 1895 - 8 1/2" Long. Excellent Paint. The raccoon is missing his tail. Estimate: 700.00 - 900.00

**225 Fishing Man on Base**

English - 1935 - 7 3/4" tall. Fine Condition. Not working. Estimate: 60.00 - 90.00

**220 Gator Baiter Bell Toy**

N. N. Hill Company. Connecticut - 1905 - 7" Long. Very Fine Condition. Estimate: 600.00 - 800.00

**226 Basketball Game with Box**

Made in Italy - 1950's - Base 12" x 6 3/8". Excellent Condition. Box with tears, is good condition. Estimate: 100.00 - 150.00



Toy Stories - Cyber 16 3/25/2022

LARGER/ ADDITIONAL IMAGES ON LIVEAUCTIONEERS.COM

LOT #**227 Play Golf with Box - Strauss**

Ferdinand Strauss Company. New York City - 1920's - 12" x 7". Excellent Condition. Missing the golf balls and box is in fair condition. Estimate: 300.00 - 400.00

**228 Two Windup Automobiles - Minic**

By Minic Toys. English - 1950's - 6 1/2" / 7" Long. Excellent Plus Condition. One with original box. Both not working. Estimate: 100.00 - 150.00

**229 Two Windup Sedans**

Lima / Ingap. Italian - 1950's - 6 1/4" / 7 1/4" Long. Excellent Plus. Both toys work very well. Estimate: 125.00 - 175.00

**230 Four Cars and Trucks**

Various Makers. American / European - 1930's to 1960's. Included is a Schuco Fire Chief, Mercury Bentley, Minic Telephone Truck and Tootsietoy Graham. Very Fine or Better Condition. Estimate: 75.00 - 100.00

**231 Two Plastic / Tin Toys - Paya**

Made by Paya. Spanish - 1960 - 5 1/2" / 6". Very Fine Condition. Both not working. Estimate: 40.00 - 50.00

**232 Battery Operated Coupe / Friction Coupe**

Made in China - 1980's. 7 1/4" / 10" Long. Pristine Condition Estimate: 80.00 - 120.00

**LOT #****233 Two Open Sports Car Coupe**

Italian / Swiss - 1940's - 5 1/2" / 6 1/8" Long. The Swiss Radio Car by Jibby Works. Estimate: 100.00 - 150.00

**234 Windup Musical Sedan - Minic**

By Minic Toys. English - 1950's - 7 1/4" Long. The toy works quite well. Near Mint with Box. Estimate: 125.00 - 175.00

**235 Three Artillery Toys**

Solido / Britains. Italian / English. 1950's / 1960's. 3 1/2" - 5" Long. Included are a Renault R35 Tank and a Sherman M4 Tank by Solido and a Union Artillery by W. Britains. Pristine Condition. Estimate: 75.00 - 100.00

**236 Two Tank Tin Toys**

Western German - 1950's - 6 1/4" / 7 1/2" Long. The kinetic energy tank's cord was cut away. The other tank is simply hand operated. Excellent Plus Condition. Estimate: 75.00 - 100.00

**237 Three Toys**

European - 1950's / 1970's. Excellent Condition. The boxed toy was never assembled. Estimate: 40.00 - 60.00

**238 Flatbed Truck - Windup Toy**

German - 1930's - 10" Long. The toy works well. Very Fine Condition. Estimate: 125.00 - 175.00



Toy Stories - Cyber 16 3/25/2022

LARGER/ ADDITIONAL IMAGES ON LIVEAUCTIONEERS.COM

LOT #

239 Italian Soldier Set (20 Pieces)

Made in Italy - 1935 - 3" Tall. Made of aluminum or a similar alloy. They are Near Mint and Bright. \$30 extra shipping. Estimate: 125.00 - 175.00



LOT #

245 Two Alligator Toys - RSA

One marked RSA. European - 1930's - 9 1/2" / 14 1/2" Long. Very Fine Condition. The smaller one's mechanism appears to be complete, but frozen and presently not working. Estimate: 100.00 - 150.00



240 Medical Themed Soldier Set

Italian - 1930's - 3" to 4" tall. Pristine Condition. Made of heavy laminated cardboard and mounted to wooden bases. Estimate: 125.00 - 175.00



246 Two Reproduction Paya Automobiles

Spanish - 1980's - 8" / 17" Long. Mint Condition. **Additional Shipping Charge Due To Large Lot Size** Estimate: 100.00 - 150.00



241 Assorted Figures

European - 1930's to 1950's - 3" to 4" Tall. Pristine Condition. Included are a Durso native captivity set, three Alpine Italian Soldiers and a Britain's Majesty's State Coach. Estimate: 125.00 - 175.00



247 Reproduction Paya Sedan

Spanish - 1980's - 18" long. Mint in Box. **Additional Shipping Charge Due To Large Lot Size** Estimate: 125.00 - 175.00



242 Dime Store Soldiers (30 Pieces)

Manoil & Barclay Mfg. Co. American - 1930's - 3" to 4" Tall. Very Fine to Excellent Condition. Estimate: 125.00 - 175.00



248 Alpine Tunnel with Track - Schuco

Schuco, Licensed in Spain. Excellent Plus Condition. Estimate: 100.00 - 150.00



243 Clown Acrobats - Assembly Toy

Probably Italian - 1950's. To be assembled. Very Good Condition. Box bottom only. Estimate: 50.00 - 75.00



249 Assorted Celluloid Toys

Japanese - 1930's - 1960's - Varying Sizes. Very Good Condition. Charlie Chaplin with crack near hands. **Additional Shipping Charge Due To Large Lot Size** Estimate: 75.00 - 100.00



244 Volkswagen Bus Friction Toy

Tipp & Company. Made in Western Germany - 1955 - 9" Long. Near Mint with Box. Estimate: 80.00 - 120.00



250 Two Lead Trucks - Mercury

Made by Mercury. Italian - 1960's - 5 1/2" Long. Pristine with Box. The bed of the flatbed truck is loose. Estimate: 60.00 - 90.00



Toy Stories - Cyber 16 3/25/2022

LARGER/ ADDITIONAL IMAGES ON LIVEAUCTIONEERS.COM

LOT #

251 Two Flatbed Trucks - Mercury

Made by Mercury. Italian - 1960's - 8 3/4" Long. Pristine with Boxes. Estimate: 100.00 - 150.00



LOT #

257 Freight Train Set - Mercury

Made by Mercury. Italian - 1955 - 25" Assembled. Pristine with Box Estimate: 75.00 - 100.00



252 Two Pistols - Mercury

Made by Mercury. Italian - 1960's - 2 1/2" / 6" Long. Pristine with Boxes. The rubber on the darts is dried out. Estimate: 75.00 - 100.00



258 Massey - Ferguson Farm Equipment - Mercury

Made by Mercury. Italian - 1960's - Box Dimensions 6" x 8". Pristine with Box. Estimate: 75.00 - 100.00



253 Fiat 1400 Sedan - Mercury

Made by Mercury. Italian - 1950's - 7" Long. The mechanism works well. Near Mint in Box. Estimate: 125.00 - 175.00



259 Two Alpine Windup Toys

Western German - 1960 - 17" Long. The boxed set was never assembled and is virtually mint. Pristine / Mint with Box. Estimate: 100.00 - 150.00



254 Two Autocarro "Golia Ercole" Flatbed Trucks

Made by Mercury. Italian - 1950's - 13" Long. Mint in Box. Estimate: 150.00 - 200.00



260 Alpine Express - Technofix

Made by Technofix. Western Germany - 1955 - 19 1/2" Long. Near Mint Condition. Box Good with Tears. Estimate: 100.00 - 150.00



255 Two Autocarro "Golia Ercole" Flatbed Trucks

Made by Mercury. Italian - 1950's - 13" Long. Mint in Box. Estimate: 150.00 - 200.00



261 Three Bus Toys with Tracks

Germany / Western Germany - 1950's / 1960's. Pristine with Boxes. Estimate: 100.00 - 150.00



256 Autocarro Fiat 682 N - Mercury

Made by Mercury. Italian - 1960's - 10" Long. Pristine with Box. Estimate: 75.00 - 100.00



262 Two Tram Toys / Schuco "Brucke 3050" Track

U. S. Zone or Western Germany. 1940's / 1950's. Varying Sizes. Pristine with Boxes. Box Very Good with Tears. Estimate: 150.00 - 225.00



Toy Stories - Cyber 16 3/25/2022

LARGER/ ADDITIONAL IMAGES ON LIVEAUCTIONEERS.COM

LOT #**263 Soccer Toy / "Pen" Car Go Round**

Italian - 1930's / 1950's - Varying Sizes.
Very Fine or Better. Boxes Very Good,
some tears. Estimate: 150.00 - 225.00

**LOT #****269 Triumph T. R. 3 Coupe Friction Toy**

Japanese - 1958 - 8 1/4" Long. Excellent
Plus Condition. The friction mechanism
works well. Estimate: 90.00 - 120.00

**264 Three Truck Cabs**

By Arnold Mfg. Western German - 1960 -
7" Long. Excellent or Better Condition.
Cabs only. Estimate: 80.00 - 120.00

**269a Highway Patrol Car Friction Toy**

Japanese - 1960 - 9 3/4" Long. Very Fine
Condition. Front wheel assembly is low.
**Additional Shipping Charge Due To
Large Lot Size** Estimate: 50.00 - 75.00

**265 Fruits & Vegetables Truck - Goso**

Made by Goso. Western Germany - 1960 -
13 1/2" Long. This is a friction driven toy.
Excellent Plus Condition. Missing its
cargo. Estimate: 60.00 - 90.00

**270 Four Seat Convertible Windup Toy**

Made by Arnold. German - 1950's - 9 1/2"
Long. Pristine Condition. Works well.
Estimate: 100.00 - 150.00

**266 Two Trolley - Bus Tracks**

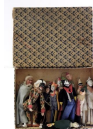
H O Scale. Made in West Germany -
1960's. Mint in Box. Estimate: 75.00 -
100.00

**271 Mercedes Coupe 190 Battery Op Toy**

Japanese - 1960's - 10 1/2" long. Excellent
Condition. Estimate: 100.00 - 150.00

**267 Composition and Fabric Puppets**

10 in Total. European - 1930's. Pristine
Condition. Box with tears. Estimate:
150.00 - 200.00

**272 Four Seat Convertible - Arnold**

Hand Operated. German - 1950's - 9 1/2"
Long. Excellent Plus. Estimate: 100.00 -
150.00

**268 Mercedes Convertible Friction Toy**

Made by ATC. Japanese - 1965 - 9 3/4"
Long. Pristine Condition. The mechanism
works really well. Estimate: 90.00 - 120.00

**273 Four Seat Convertible - Joustra**

Made by Joustra. French - 1950's - 11 1/2"
Long. Appears to be both battery operated
and friction. Excellent Plus Condition.
Estimate: 100.00 - 150.00



Toy Stories - Cyber 16 3/25/2022

LARGER/ ADDITIONAL IMAGES ON LIVEAUCTIONEERS.COM

LOT #

274 Aluminum Sedan with Box

Probably German - 1955 - 8" Long. The wheels have a suspension system. Excellent Plus with Box. Estimate: 60.00 - 90.00



275 Two Seat Convertible Friction Toy

Made by Harold Flory. English - 1955 - 10" long. Excellent Plus Condition. Estimate: 75.00 - 100.00



276 Friction Coupe Tin Toy

Japanese - 1955 - 9 1/2" long. Very Fine Condition. Scuffing underneath and minor denting. Estimate: 50.00 - 75.00



277 Pontiac Sedan Friction Toy

Japanese - 1955 - 11 1/2" long. Excellent Condition. Scuffs on bottom. Estimate: 125.00 - 175.00



278 Ford "Fairlawn" Sedan Friction Toy

Japanese - 1960's - 12" Long. Excellent Condition. Scuffed on Bottom. Estimate: 100.00 - 150.00



279 Four Seat Convertible Friction Toy

Japanese - 1960's - 12" long. Very Fine Condition. Driver headless and missing his spouse. Estimate: 75.00 - 100.00



LOT #

280 Two Race Car Tin Toys

Wyandotte / Marx. American - 1930's - 8 1/2" / 13" Long. The Marx is missing its mechanism and the front left tire is loose. The Wyandotte has working headlights. Estimate: 80.00 - 120.00



281 Tram - Hand Crank Mechanism

Made by Zax. Italian - 1930's - 13 1/2" Long. Excellent Condition. Made of wood and tin. The toy works well. Estimate: 80.00 - 120.00



282 Race Car / Transport Truck Tin Toy

Italian - 1960's - 6" / 8" Long. Very Good / Excellent Condition. The truck is a windup and in very good working condition. The Grand Prix Race car is a friction in excellent, working condition. Estimate: 75.00 - 100.00



283 Two Windup Tank Toys

Made by Joustra / German. French - 1960 - 5 1/2" / 8" Long. The Italian toy is virtually mint and boxed. It works very well. The German tank mechanism works but the treads are loose. Estimate: 150.00 - 200.00



284 Aerial Ladder Truck Friction Toy

Tipp & Company. West German - 1955 - 10" Long. Pristine Condition. Estimate: 75.00 - 100.00



Toy Stories - Cyber 16 3/25/2022

LARGER/ ADDITIONAL IMAGES ON LIVEAUCTIONEERS.COM

LOT #**285 Aerial Ladder Truck Windup Toy**

Charles Rossignol. French - 1930 - 7" Long. Very Fine Condition. Missing its driver. Estimate: 75.00 - 100.00

**LOT #****291 Steam Attachment Fountain**

German - 1920 - 6" Wide. Fine Condition. Estimate: 80.00 - 120.00

**286 Aerial Ladder Truck - Hans Eberl**

Hans Eberl. German - 1925 - 8 1/2" Long. The toy works well. The front right fender is present, but detached. Missing the driver. Estimate: 150.00 - 200.00

**292 Europe Transport Windup Toy**

Made by Berliet. European - Late 1940's - 19 1/2" Long. The toy's mechanism works well. Excellent Plus Condition. Some tires distressed. Estimate: 150.00 - 200.00

**287 Two Horse Fire Patrol - Orober**

Orober - 1920 - 8" Long. The toy works well. There is some surface rust on one wheel and at the rear of the toy. Fine Condition. Estimate: 90.00 - 120.00

**293 Gyrocopter Plane - JEP**

Made by JEP. Paris, France - Late 1940's - 9" Long x 11 1/2" Wingspan. Fine Condition. 1/2 of propellor is missing. Estimate: 75.00 - 100.00

**288 Aerial Ladder Truck Windup Toy**

Charles Rossignol. French - 1930 - 9 3/4" Long. Very Fine Condition. Estimate: 125.00 - 175.00

**294 One Man Jazz Band Windup Toy**

Made in Japan - 1935 - 10" Tall. Fine Condition. Estimate: 125.00 - 175.00

**289 Aerial Ladder Truck Windup Toy**

Probably Wells or Brimtoy. English - 1930 - 16" Long. Fine Condition. The toy works well, there is some minor surface rust. Estimate: 200.00 - 275.00

**295 Camouflaged Biplane - Ingap**

Possibly Ingap. European - 1930's - 12 3/4" Long x 11 1/2" Wingspan. The toy works very well. Excellent Plus Condition. Estimate: 200.00 - 300.00

**290 Rapid Transit Cars - Ingap**

Italian - 1920's - 14" Long. Excellent Plus Condition. Has a box bottom. Estimate: 200.00 - 275.00

**296 TV News Airplane Friction Toy**

Made by Taiyo World Toy. Japanese - 1950's - 11 3/4" Long x 13 1/2" Wingspan. Excellent Plus Condition Estimate: 150.00 - 200.00



Toy Stories - Cyber 16 3/25/2022

LARGER/ ADDITIONAL IMAGES ON LIVEAUCTIONEERS.COM

LOT #**297 Seaplane with Pontoon Toy - JEP**

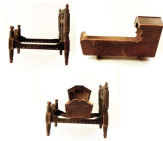
Made by JEP. French - 1930's - 12" Long x 19" Wingspan. This plane usually sells for \$1500 - \$2000, this example will not. It's good as a starter example or for parts. Fair Condition. Not working. Estimate: 250.00 - 350.00

**298 Passenger Biplane Tin Toy**

English - 1930's - 20" Long x 21" Wingspan. This airplane toy in as found fair-good condition. It is presently not working. The mechanism appears to be complete. Surface rust throughout. Fair to Good Condition. Estimate: 125.00 - 175.00

**299 Rope Bed / Cradle**

New England - Circa 1850. Bed 17" Long x 11" Wide. Cradle 19" Long x 8.5" Wide. Bed must be re-roped. Fine Overall Condition. Age cracks overall. **Additional Shipping Charge Due To Large Lot Size** Estimate: 175.00 - 225.00

**300 Four Lithographed Cover Books**

By J. McLoughlin (3) / Worthington Co. (1). New York City - 1890's. Includes "The Arabian Night", published by Worthington, "The Favorite Story Book", "Stories for the Household" and "Young Folks Happy Holidays" all published by McLoughlin Bros. Very Good to Very Fine Condition. Estimate: 75.00 - 125.00

**LOT #****301 Two Boxed Tea Sets**

German - 1890 / 1900's. Excellent Condition. Boxed Very Good. Estimate: 150.00 - 200.00

**302 John Gilpin's Ride - Crandall**

Made by Crandall. New York - 1875. Very Fine Condition. Box Good and missing some of its slide board. Estimate: 225.00 - 300.00

**303 Jack and the Beanstalk Puzzle Blocks**

McLoughlin Bros. New York City - 1890 - Box 11" Tall x 8 1/4" Wide. Very Fine Cubes. Box with tear upper right. Estimate: 200.00 - 275.00

**304 Marriage Optical Toy**

This optical toy depicts the Chapel Wedding of the Prince of Wales (ultimately King Edward VII) to Danish Princess Alexandra. English - Dated 1863 - 26" Tall when opened. Very Fine Condition. Estimate: 250.00 - 300.00

**305 Autoperipatetikos Walking Doll**

American - 1860's - 9" Tall. We did not test to see if she walks. Fine Overall Condition. Her feet and arms slightly loose from her body. Estimate: 350.00 - 450.00

**306 Charlie Chaplin Walking Figure**

Probably German - 1910's - 11 3/4" Tall. Made of tin, paper mache and fabric. He did work when tested. Good Condition. Estimate: 125.00 - 175.00



Toy Stories - Cyber 16 3/25/2022

LARGER/ ADDITIONAL IMAGES ON LIVEAUCTIONEERS.COM

LOT #**307 Three Viewmasters with Slides**

American - 1950's / 1970's. Very Fine Condition. There are 150 slides. Estimate: 40.00 - 60.00

**308 Magic Lantern Slides**

European - 1890's / 1910's. Varying Sizes. Very Fine Condition. There are about 30 slides. Estimate: 60.00 - 80.00

**309 Toonerville Trolley Game**

Milton Bradley. American - 1920's - Box 17" Wide x 9" Tall. Very Fine Condition. Box with tears. Estimate: 50.00 - 75.00

**310 "Columbia" Paddlewheel Boat**

Made by Milton Bradley. Springfield, MA - 1885 - 23" Long x 10 1/2" Tall. Excellent Condition. Missing most of its flag. **Additional Shipping Charge Due To Large Lot Size** Estimate: 375.00 - 500.00

**311 Cast Iron Floor Train**

Carpenter Toy Co. Port Chester, New York - 1880's - 17 1/2" Long. Good Condition. Original figure is present but broken underneath feet (both pieces present). A Lionel RR Crossing accompanies this lot. Estimate: 125.00 - 175.00

**LOT #****312 Cast Iron Floor Train**

Pratt & Letchworth. Buffalo, New York - 1890's - 32" Long. Made of cast iron and pressed steel. A Lionel RR crossing accompanies the lot. Fine Condition. **Additional Shipping Charge Due To Large Lot Size** Estimate: 30.00 - 300.00

**313 Sunshine Special Train Set**

The Hafner Mfg. Co. Chicago, Illinois - 1930's - 27" Long. Pristine Condition. Estimate: 175.00 - 225.00

**314 Drummer Boy - Wolverine**

By Wolverine Supply Mfg. Co. American - 1930's. 14" Tall. Excellent Plus Condition. Works very well. Estimate: 150.00 - 200.00

**315 Mule Cart - Marx**

Louis Marx & Co. NYC, NYC - 1930's - 8" Long. Pristine Plus Condition. Works very well. Estimate: 75.00 - 125.00

**316 Hurdy Gurdy - Futureland Toys**

By Futureland Toys. Culver City, CA - 1960's - 8 1/2" Tall. Pristine Condition. Box fine condition. Complete with "Gurdy Man Mustache". Plays the song "Carnival in Venice". Estimate: 100.00 - 150.00

**317 Humpty Dumpty Bank**

By Dane St. Art Co. American - 1940's - 9 1/2" Tall. Pristine Condition. **Additional Shipping Charge Due To Large Lot Size** Estimate: 150.00 - 200.00



Toy Stories - Cyber 16 3/25/2022

LARGER/ ADDITIONAL IMAGES ON LIVEAUCTIONEERS.COM

LOT #

318 Scale with Gooseheads - Marklin

By Gebruder Marklin. German - 1910 - 7" Long. Pristine Condition. Estimate: 400.00 - 600.00



LOT #

324 Punch & Judy Iron Bank

Shepard Hardware Company. Buffalo, New York - 1890's. Fair Condition. Lacks baseplate. Estimate: 225.00 - 300.00



319 Railroad Set with Original Box

Japanese - 1930's - Box 10 1/4" Long x 8" Tall. Near Mint Plus Condition. Estimate: 175.00 - 225.00



325 Creedmoor Iron Mechanical Bank

J. & E. Stevens Company. Cromwell, Connecticut - 1880's. Good Condition. Lacks trap. It needs a minor adjustment to work well. Estimate: 150.00 - 200.00



320 Passenger #253 Train Set - Lionel

Lionel Corporation. NYC, NYC - 1930's - 38" Long. Pristine Condition. Retains three original boxes for cars. Boxed Cars with Set Box. **Additional Shipping Charge Due To Large Lot Size** Estimate: 300.00 - 400.00



326 Teddy and the Bear Iron Bank

J. & E. Stevens Company. Cromwell, Connecticut - 1907. His back must be opened to fix the mechanism to work. Fair Condition. Significant Repaint. Estimate: 225.00 - 300.00



321 Cabin Iron Mechanical Bank

J. & E. Stevens Company. Cromwell, Connecticut - 1880's. Good Condition. Some Old Repaint. Estimate: 125.00 - 175.00



327 Indian and the Bear Iron Bank

J. & E. Stevens Company. Cromwell, Connecticut - 1890's. Very Fine Paint Condition. Lacks feathers. Estimate: 550.00 - 750.00



322 Toad on Stump Iron Bank

J. & E. Stevens Company. Cromwell, Connecticut - 1880's. An old, good looking repaint. Estimate: 175.00 - 225.00



328 Clown & Globe Cast Iron Bank

J. & E. Stevens Company. Cromwell, Connecticut - 1890's. Fine Condition. Needs a good cleaning. Estimate: 550.00 - 750.00



323 Mule Entering Barn Mechanical Bank

J. & E. Stevens Company. Cromwell, Connecticut - 1890. Very Good Condition. Estimate: 375.00 - 500.00



329 Dog on Turntable Iron Bank

H. L. Judd Company. Wallingford, Connecticut - 1890's. Good Condition. Broken door arch piece present, but loose. Estimate: 125.00 - 175.00



Toy Stories - Cyber 16 3/25/2022

LARGER/ ADDITIONAL IMAGES ON LIVEAUCTIONEERS.COM

LOT #**330 Fish and Windmill Still Banks**

Japanese / German - 1930 / 1950's. Very Fine Condition. Estimate: 50.00 - 75.00

**LOT #****336 Washington Monument / Mt. Bethel College**

American - 1910's / 1930's. One an old repaint, one Excellent Condition. Estimate: 80.00 - 120.00

**331 1876 Small / Six Siding Building Banks**

American - 1880's - 2 1/2" / 2 3/4" Tall. Good Overall Condition. Silver bank is very old repaint and six-sided building with replaced twist pin. Estimate: 75.00 - 100.00

**337 Harleysville / County Banks**

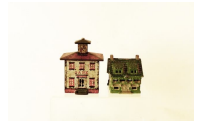
American / English - 1940's / 1950's. Pristine Condition. The County Bank is a 1940's brass example. Estimate: 60.00 - 90.00

**332 Three Building Banks**

American - 1890's / 1890's. 3 3/4" to 4 1/4" Tall. Excellent or Better Condition. Estimate: 150.00 - 200.00

**338 Large Cupola / Bungalow Banks**

American - 1870's / 1920's. 3 1/2" / 5" Tall. Very Good / Fine Condition. Bungalow missing tiny part of roof. Estimate: 100.00 - 150.00

**333 Three Building Banks**

American - 1890's - 5 1/2" to 5 3/4" Tall. Included are a State Bank with Opening Door, Roof Bank and Four Turret Bank. Fine to Excellent Condition. Estimate: 175.00 - 225.00

**339 Pagoda Iron Bank - Green**

English - 1910 - 5 1/4" Tall. Very Good Condition. Estimate: 90.00 - 120.00

**334 Home Savings / Double Door Banks**

American - 1890's - 5 1/2" / 6" Tall. Very Fine / Excellent Condition. Estimate: 125.00 - 175.00

**340 City Bank with Teller Iron Bank**

H. L. Judd Co. Wallingford, Connecticut - 1880's - 5 3/4" Tall. Very Fine Condition. Estimate: 125.00 - 175.00

**335 Space Heater with Birds / Pagoda Bank**

English - 1890's - 5 1/4" / 6 3/4" Tall. Fine Condition. Estimate: 150.00 - 200.00

**341 New England Church Iron Bank**

American - 1930's - 7 1/2" Tall. Well repainted. Estimate: 125.00 - 175.00



Toy Stories - Cyber 16 3/25/2022

LARGER/ ADDITIONAL IMAGES ON LIVEAUCTIONEERS.COM

LOT #**342 Church Towers Iron Bank**

Eddy & Stephens. New England - 1880's - 6 7/8" Tall. Fine Condition. Trap replaced. The Church Towers Bank is fragile and fairly scarce. Estimate: 225.00 - 300.00

**LOT #****348 Domed Mosque - Large Iron Bank**

Grey Iron Casting Company. Mount Joy, Pennsylvania - 1910 - 5 1/8" Tall. Fine Condition Estimate: 175.00 - 225.00

**343 Bureaux Caisse - Aluminum Bank**

French - 1920's - 8 3/4" Tall. Very Fine Condition. Estimate: 125.00 - 175.00

**349 Columbia Bank - 2nd Smallest Iron Bank**

Kenton Hardware. Kenton, Ohio - 1895 - 5 3/4" Tall. This is a scarce nickel plated example. Very Fine Condition. Lacks trap. Estimate: 250.00 - 325.00

**344 Villa Iron Bank**

Kyser & Rex Company. Philadelphia - 1890 - 5 3/4" Tall. Fine Condition. Replaced Finial. Estimate: 75.00 - 125.00

**350 Gingerbread House - KLT - Iron Bank**

Probably French - 1920's - 4" Tall. The bank retains its original trap and has silver, copper and violet highlights. Fine Condition. Could stand a cleaning. Estimate: 250.00 - 325.00

**345 Finial Iron Bank**

Kyser & Rex Company. Philadelphia - 1890's - 5 3/4" Tall. Very Fine Condition. Kyser & Rex Company was one of the finest producers of delicate and beautiful still banks. Estimate: 150.00 - 250.00

**351 Marietta Silo Iron Bank**

American - 1920 - 5 1/2" Tall. The Marietta Silo Company began operations in Marietta, Ohio in 1916. They have changed owners and names many times, but still build silos today. Excellent Condition. Estimate: 300.00 - 400.00

**346 Pearl Street Iron Bank**

American - 1905 - 4 1/4" Tall. The Pearl Street Bank operated in Cleveland, Ohio at 1400 Pearl Street and Detroit Avenue. Very Good Condition. Missing tin trap. Estimate: 200.00 - 275.00

**352 Crown Bank on Legs - Small**

American - 1880's - 4 5/8" Tall. This is the very scarce small version of the bank. Very Fine Condition. Minor inpaint to green. Estimate: 350.00 - 450.00

**347 Home Savings Bank**

Shimer Toy Co. Pennsylvania - 1899 - 5 7/8" Tall. Pristine Condition. This is a superior example of the bank. Estimate: 150.00 - 200.00



Toy Stories - Cyber 16 3/25/2022

LARGER/ ADDITIONAL IMAGES ON LIVEAUCTIONEERS.COM

LOT #**353 Globe Savings Fund Iron Bank**

Kyser & Rex Company. Philadelphia -
1890 - 7 3/8" Tall. Repainted. Estimate:
200.00 - 300.00

**LOT #****358 Building with Belfry Iron Bank**

Kenton Hardware Company. Kenton, Ohio
- 1895 - 8" Tall. A very old repaint. 1"
base hairline crack. Estimate: 375.00 -
500.00

**354 State Bank - Largest - Multicolor**

American - 1900 - 7 3/4" Tall. This bank
is a conundrum for us for several reasons.
We have never seen a large version in
multicolor. Paint, however, appears to be
original. We have never seen a version
with a solid (no holes) base, yet this base is
definitely 100 years old. We have never
seen the bank assembled this way, without
a twist pin, yet the assembly appears
original. The only thing we can surmise is
that a small foundry produced this bank
using Kenton as a prototype. Fine
Condition. Estimate: 350.00 - 450.00

**359 Jarmulowsky Building Iron Bank**

C. G. Sheppard & Co. NYC, NYC - 1910
- 7 3/4" Tall. Both clocks and two
crenellations are missing from the roof.
The baseplate is missing the trap and part
of its left side. Good Overall Condition.
Estimate: 300.00 - 400.00

**360 Property of the Home Savings Bank**

Of Detroit, Michigan. American - 1890's -
11" Tall. An old repaint. Replaced inserts.
**Additional Shipping Charge Due To
Large Lot Size** Estimate: 200.00 -
275.00

**355 New England Church Iron Bank**

American - 1930 - 7 1/2" Tall. Good
Condition. Some surface rust. Estimate:
125.00 - 175.00

**361 City Bank with Eagle Iron Bank**

American - 1880 - 11 1/2" Tall. This is
one of the largest building banks ever
produced. The maker is unknown, but it
was probably done by a small cottage
industry foundry in New England. The
paint colors on this bank are lovely. The
eagle's left wing is repainted and there is a
casting flaw on the rear panel. Very Fine
Overall Condition. **Additional Shipping
Charge Due To Large Lot Size** Estimate:
1,500.00 - 2,000.00

**356 The Palace Iron Bank**

Ives, Blakeslee Company. Bridgeport,
Connecticut - 1890 - 7 1/2" Tall. The
Palace Bank is one of the most intricate
and delicate banks ever produced. Very
Fine Condition. Spire and Trap replaced.
Estimate: 400.00 - 600.00

**357 State Bank - Largest - Iron Bank**

Kenton Hardware Company. Kenton, Ohio
- 1899 - 8 1/4" Tall. Very Fine Condition.
Estimate: 350.00 - 450.00

**362 Bank with Eagle**

American - 1890's - 9 3/4" Tall. Excellent
Plus Overall. Upper right window broken
out. Estimate: 250.00 - 350.00



Toy Stories - Cyber 16 3/25/2022

LARGER/ ADDITIONAL IMAGES ON LIVEAUCTIONEERS.COM

LOT #

363 Palace Bank - Red

Ives, Blakeslee Company. Bridgeport, Connecticut - 1890 - 7 3/4" Tall. A wonderful repaint. Looks like a \$10,000 example. Estimate: 500.00 - 700.00



LOT #

369 Bank of Industry

Kenton Hardware. Kenton, Ohio - 1905 - 5 3/8" Tall. Very Fine Condition. Lock mechanism not working. Estimate: 125.00 - 175.00



364 Economy Accumulates Wealth Beehive Bank

American - 1890's - 7" Tall. This bank was made for use by several different financial institutions. This one for "The Farmers and Merchants Bank" of Freeport, Illinois. Fine Condition. Estimate: 375.00 - 500.00



370 Two Safe Banks

Wing and Mudd Mfg. Co. American - 1900/1905 - 6 5/8" - 6 7/8" Tall. The Libertas Safe with two small pieces broken out of its left panel and the Security Safe burnished brightly. Very Good Overall. **Additional Shipping Charge Due To Large Lot Size** Estimate: 175.00 - 225.00



365 Town Safe / Time Around World Iron Banks

Arcade Mfg. Co. Freeport, IL. - 1920 - 4" Tall. Very Fine Condition. Estimate: 100.00 - 150.00



371 Destination Moon Bank

Duro-Mold Mfg. Co. Detroit, Michigan - 1960 - 10 3/4" Tall. Pristine Condition with Original Key. Estimate: 125.00 - 175.00



366 Home Safety Bank

Union Manufacturing & Plating. American - 1895 - 3 7/8" Tall. This is a scarce, highly desirable safe bank that is in superior condition. Pristine Plus Condition. Estimate: 300.00 - 400.00



372 Three Building Banks

American - 1880's - 1920's. The Large Cupola and Large House with Porch are repainted. Estimate: 75.00 - 100.00



367 Treasure Safe / Gettysburg Safe

J. & E. Stevens / In Focus Tech. American 1890's / 2000's - 4" & 5" Tall. Very Good / Mint Condition. Estimate: 75.00 - 100.00



373 Seven Modern Banks

Mostly American - 1950's - 2000's. Fine to Excellent Condition. **Additional Shipping Charge Due To Large Lot Size** Estimate: 40.00 - 60.00



368 National Safe - Large

Nickel Plated Finish. Comstock and Wing - 1890 - 5 3/8" Tall. The large version is quite scarce. The rear and side panels are truly beautiful. Very Fine Condition. Estimate: 275.00 - 375.00



Toy Stories - Cyber 16 3/25/2022

LARGER/ ADDITIONAL IMAGES ON LIVEAUCTIONEERS.COM

LOT #

374 Seven Mailbox Banks

Wood & Glass. American - 1920's - 1950's. Very Fine Condition.
Additional Shipping Charge Due To Large Lot Size Estimate: 50.00 - 75.00



LOT #

379 Two Steam Attachments

Linemar / Arnold. Japanese / German - 1950's - 2 1/2" to 3 1/2" Tall. Fine to Excellent Condition. Estimate: 40.00 - 60.00



375 Four Modern Banks

Various Makers / Countries - 1970's - 2000's. Excellent to Pristine Condition.
Additional Shipping Charge Due To Large Lot Size Estimate: 60.00 - 90.00



380 Electric Steam Plant

Specialty Instruments & Machine Company. Pittsburgh, PA - 1950's - 9 1/2" Long. Excellent Condition. Estimate: 60.00 - 90.00



376 Seven Bank Books

American - 1980's to 2000's. Included are: Cast Iron Building Banks, The Penny Bank Book, Painted German Spelter Banks, Penny Lane, The Safe Bank Book, Registering Banks and J. Chein & Co. Pristine Condition. **Additional Shipping Charge Due To Large Lot Size** Estimate: 150.00 - 200.00



381 Clay Building Block Set

German - 1910 - Box 6" Wide x 4" Tall. Excellent Condition. Estimate: 50.00 - 75.00



377 Seven Bank Books

American - 1980's to 2000's. Included are: Penny Banks Around the World, Banthrico Coin Banks, Political Banks, A Penny Saved, Pocket Banks, Encyclopedia of Toys & Banks and Banthrico Banks and Beyond. Pristine Condition. **Additional Shipping Charge Due To Large Lot Size** Estimate: 100.00 - 150.00



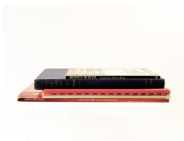
382 Paper Lithographed Block Set

German - 1910 - Box 11" Long x 5 1/4" Tall. A complete set with the 5 lithographed pages that can be assembled. Very Fine Condition. Estimate: 75.00 - 125.00



378 Five Older Bank Books

Included are Dictionary of Still Banks, The Architecture of Cast Iron Penny Banks, Money Boxes, Old Iron Still Banks (Whiting) and Old Mechanical Banks (Bellows). Fine to Excellent Condition. Estimate: 75.00 - 100.00



383 Trolley Car Tin Toy

German - 1920 - 8" Long. The toy works well. Excellent Condition. Estimate: 175.00 - 225.00



384 Two Tin Trolley Toys

One marked RSA. Spanish - 1930's - 8 1/8" Long. Both are very colorful and work well. Pristine Condition. Estimate: 100.00 - 150.00



Toy Stories - Cyber 16 3/25/2022

LARGER/ ADDITIONAL IMAGES ON LIVEAUCTIONEERS.COM

LOT #**385 Trolley Tin Toy**

Made by Gunthermann. German - 1915 - 10" Long. Very Fine Condition. This colorful trolley is quite colorful and works well. Estimate: 200.00 - 300.00

**LOT #****391 Musical Organ Bank with Box**

Battery Operated. Made by HTC. Japanese - 1950's - Box 7" Square. We did not test this bank. Excellent Condition. Box Fine Condition. Estimate: 70.00 - 90.00

**386 Green Line Bus Tin Toy**

English - 1930's - 7" Long. Excellent Condition. Works well. Estimate: 75.00 - 100.00

**392 American Circus Truck**

Battery Operated. Made by Excelo. Japanese - 1950's - 9" Long. We did not test this toy, but the battery housing is pristine. Pristine Condition. Estimate: 80.00 - 120.00

**387 Double Decker Bus Tin Toy**

English - 1930's - 6 1/2" Long. The toy works well. Fine Condition. Some surface rust. Estimate: 50.00 - 70.00

**393 Rocket Friction Toy**

Japanese - 1950's - 2 7/8" Long. Pristine Condition. Estimate: 40.00 - 60.00

**388 Two Windup Car Toys**

English - 1940's - 5 3/4" Long. Both worked well. Pristine Condition. One with box. Box missing one end flap. Estimate: 125.00 - 175.00

**394 Rocket Racer Friction Toy**

Made by TM. Japanese - 1950's - 7" Long. The toy works well. Loud rocket engine sound emits. Pristine Plus Condition. Estimate: 60.00 - 90.00

**389 Two Windup Cars with Boxes**

Schuco Toys. German - 1950's/1960's - 4 1/4" long. One a Saloon Car and the other a Mercedes Sedan. Both work well. Mint with Box. One box missing an end flap. Estimate: 100.00 - 150.00

**395 GE-268 Rocket - Friction Toy**

By Technofix. U. S. Zone Germany - 1950's - 9 1/2" Long. Excellent Plus Condition. Estimate: 60.00 - 90.00

**390 Schuco Radio 5000 Taxi**

Schuco Toys. German - 1950's - 5 1/2" Long. Both the car and radio worked well. Fine Condition. Box bottom only. Estimate: 80.00 - 120.00

**396 Italian Airplane Tin Toy**

Italian - 1940's - 12" Long x 16" Wingspan. There appears to be some form of mechanism in the airplane, but we don't see an on/off switch. Very Good Condition. Wings dented. Estimate: 100.00 - 150.00



Toy Stories - Cyber 16 3/25/2022

LARGER/ ADDITIONAL IMAGES ON LIVEAUCTIONEERS.COM

LOT #

397 Fido on Pillow Iron Bank

Hubley Mfg. Co. Lancaster, Pennsylvania
- 1930's. An old repaint. Estimate: 50.00 - 75.00



398 Alms Box

German - 1930's - 8" Tall. Pristine Condition. Estimate: 75.00 - 100.00



399 Two Fun Games of Chance - Tin Toys

German - 1890's - 9" Tall. Marbles are put into the right side of the toy and come out the figure's mouth, roll around the tray, coming to rest in a hole marked 1 - 6. Excellent Condition. One with yellow hat and collar partially restored. Estimate: 300.00 - 400.00



400 Monkey Playing Violin Windup Toy

German - 1905 - 7" Tall. Fair Condition. Complete mechanism, but not working. Estimate: 125.00 - 175.00



401 Large Group of Asian Souvenirs

15 Items. Most Asian - 1930's to 1980's. Very Fine Condition. **Additional Shipping Charge Due To Large Lot Size** Estimate: 75.00 - 100.00



402 Group of Statues and Figures

38 Items. Various Makers. 1930's to 1980's. 2" to 9" Tall. Very Fine or Better Condition. **Additional Shipping Charge Due To Large Lot Size** Estimate: 90.00 - 120.00



LOT #

403 Group of Middle Eastern and Asian Souvenirs

9 Items. Various Makers. 4" to 9" Tall. Excellent or Better Condition. **Additional Shipping Charge Due To Large Lot Size** Estimate: 75.00 - 100.00



404 Group of Religious Souvenirs

14 items. Various Makers. 1940's to 1990's. 2" to 8" Tall. There are four images of Jesus Christ from Rio de Janeiro. One figure's hand broken off, but is present. Very Fine or Better Condition. **Additional Shipping Charge Due To Large Lot Size** Estimate: 90.00 - 120.00



405 Group of Egyptian Souvenirs

9 Items. Various Makers. The Falcon's hat must be reattached. Very Fine Condition. **Additional Shipping Charge Due To Large Lot Size** Estimate: 60.00 - 90.00



406 Group of Political Souvenirs

22 Items. American - 1940's to 1980's. Many of Abraham Lincoln or George Washington. Excellent or Better Condition. **Additional Shipping Charge Due To Large Lot Size** Estimate: 90.00 - 120.00



407 Washington D. C. Souvenirs

10 Items. American / Japanese - 1940's to 1980's. Very Fine or Better Condition. **Additional Shipping Charge Due To Large Lot Size** Estimate: 125.00 - 175.00



Toy Stories - Cyber 16 3/25/2022

LARGER/ ADDITIONAL IMAGES ON LIVEAUCTIONEERS.COM

LOT #**408 Group of American Souvenir Buildings**

12 Items. Various Makers. Largest 8" Tall. Included are the Whittier Library, Riverside Nat'l Bank, Tower Federal Savings, Richfield Tower, Prudential Building, Point Loma Lighthouse, two by In Focus Tech and others. Excellent or Better Condition. **Additional Shipping Charge Due To Large Lot Size** Estimate: 150.00 - 200.00

**409 Group of Town Monument Souvenirs**

12 Items. Various Makers. 1960's to 1990's. 3" to 8" Tall. Excellent or Better Condition. **Additional Shipping Charge Due To Large Lot Size** Estimate: 100.00 - 150.00

**410 Assorted Souvenirs of the World**

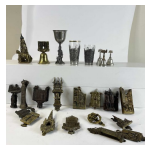
20 Items. Various Makers. Small Sized. Excellent or Better Condition. **Additional Shipping Charge Due To Large Lot Size** Estimate: 75.00 - 100.00

**411 Souvenirs of the World**

14 Items. Various Makers. 1940's to 1990's. Six of them on onyx or marble bases. Excellent or Better Condition. **Additional Shipping Charge Due To Large Lot Size** Estimate: 100.00 - 150.00

**412 European Souvenirs**

26 Items. Europe - 1940's to 1960's. Various Sizes. Included are 16 brass door knockers, 4 bells, 3 glasses and 3 others. Very Fine or Better Condition. **Additional Shipping Charge Due To Large Lot Size** Estimate: 150.00 - 200.00

**LOT #****413 Group of Washington Monuments & Other Obelisks**

23 Items. 1930's to 1970's. 3" to 8" Tall. Included are 20 Washington Monuments and three European Towers. Fine to Excellent Condition. **Additional Shipping Charge Due To Large Lot Size** Estimate: 100.00 - 150.00

**414 Assorted Wood and Ceramic Souvenirs**

8 Items. Various Makers. 1950's to 1980's. Very Fine or Better Condition. **Additional Shipping Charge Due To Large Lot Size** Estimate: 40.00 - 60.00

**415 Large Group of Smaller Souvenirs**

40 Items. Various Makers - 1960's to 2000's. Most are 1" to 2" tall. Excellent or Better Condition. **Additional Shipping Charge Due To Large Lot Size** Estimate: 50.00 - 75.00

**416 Group of Lamp Souvenirs**

Japanese/American - 1930's to 1940's - 5" to 7" Tall. There are five lamp/light souvenirs, including The Capitol, The Empire State Building, The New York 1939 World's Fair Hemisphere and two Lighthouses. Also includes are three Mormon temples and a Itasca State Park, Minnesota Tree. Excellent Condition. **Additional Shipping Charge Due To Large Lot Size** Estimate: 125.00 - 175.00

**417 Five Wooden Alaskan Highway Signs**

Made in Fairbanks, Alaska - 1940's. 4" to 11" Tall. Excellent Condition. **Additional Shipping Charge Due To Large Lot Size** Estimate: 100.00 - 150.00



Toy Stories - Cyber 16 3/25/2022

LARGER/ ADDITIONAL IMAGES ON LIVEAUCTIONEERS.COM

LOT #**418 Group of Skyscraper Souvenirs**

11 Items. American - 1980's. 2000's. 3" to 10" Tall. Included are 5 Twin Towers, 3 Hancock Towers, 1 Sears Tower, 1 Chrysler Building and a Towering Inferno. Pristine Condition. **Additional Shipping Charge Due To Large Lot Size** Estimate: 150.00 - 200.00

**419 Three Italian Towers**

European - 1940's to 1960's - 12" to 15" Tall. Included are a liquor bottle, one made of sheet brass. Excellent Condition. **Additional Shipping Charge Due To Large Lot Size** Estimate: 90.00 - 120.00

**420 Three Asian Temples**

Asian - 1940's to 1950's - 8.5" to 14" Tall. All made of brass or similar metal. The tallest is Wen Chang Moncho Tower (Taoism). Excellent Condition. **Additional Shipping Charge Due To Large Lot Size** Estimate: 125.00 - 175.00

**421 New York City Souvenirs**

American - 1960's to 1980's - 6" to 14" Tall. Excellent Plus Condition. **Additional Shipping Charge Due To Large Lot Size** Estimate: 90.00 - 120.00

**422 Five Seattle Space Needle's**

Various Makers - Most American. 1960's to 1970's. 8.5" to 13.5" Tall. Two are liquor bottles. Very Fine Condition. **Additional Shipping Charge Due To Large Lot Size** Estimate: 60.00 - 90.00

**LOT #****423 Memorial / Tip Trays**

American / Japanese - 1920's to 1950's - 5.25" to 8.25" Tall. The two large trays of N. Y. City Buildings, two long tip trays have Seattle images, Aloha Tower (Honolulu) and Scotty's Castle (Darth Valley, Ca.). Fine or Better Condition. **Additional Shipping Charge Due To Large Lot Size** Estimate: 100.00 - 150.00

**424 Statue of Liberty Clock / Lamp**

American - 1950's - 16" Tall. All it needs is a light bulb. Excellent Plus Condition. **Additional Shipping Charge Due To Large Lot Size** Estimate: 90.00 - 120.00

**425 Iqbal Park Tower**

Lahore, Pakistan. 1960's - 14.5" Tall. Pristine Condition. **Additional Shipping Charge Due To Large Lot Size** Estimate: 75.00 - 100.00

**426 Chicago Water Tower**

Double Springs Creation. American - 1969 - 16.5" Tall. The Chicago Water Tower was erected in 1867. Very Fine Condition. **Additional Shipping Charge Due To Large Lot Size** Estimate: 60.00 - 90.00

**427 Two Assembled Models of Temples**

European - 1920's to 1930's - 9" Tall. These models are made to resemble carved Ivory. They appear to be of Asian Temples. Very Fine Condition. **Additional Shipping Charge Due To Large Lot Size** Estimate: 90.00 - 120.00



Toy Stories - Cyber 16 3/25/2022

LARGER/ ADDITIONAL IMAGES ON LIVEAUCTIONEERS.COM

LOT #

428 Large Group of Building Banks

12 items. Most by Banthrico. American - 1960's to 1990's. Varying Sizes. Very Fine to Pristine Condition. **Additional Shipping Charge Due To Large Lot Size** Estimate: 90.00 - 120.00



429 Large Group of Building Banks

8 Items. Most by Banthrico. American - 1960's to 1990's. Very Fine to Pristine Condition. **Additional Shipping Charge Due To Large Lot Size** Estimate: 75.00 - 100.00



430 Group of Building / Souvenir Banks

Most by Banthrico. American - 1960's to 1990's. Very Fine to Pristine Condition. **Additional Shipping Charge Due To Large Lot Size** Estimate: 75.00 - 100.00



431 Large Group of Souvenirs

16 Items. Mostly American. 1950's to 1990's. 4" to 14" Tall. Included are several Space Needle Souvenirs and several Empire State Buildings. Very Fine to Mint Condition. **Additional Shipping Charge Due To Large Lot Size** Estimate: 100.00 - 150.00



432 Bust of Beatrice / Pioneer Woman with Son

American / European - 1950's / 1960's - 6.5" / 8.75" Tall. These are well executed and detailed statues. Excellent Condition. **Additional Shipping Charge Due To Large Lot Size** Estimate: 75.00 - 100.00



LOT #

433 Two Madonna's of Trail Souvenirs

With Bust of a Spanish Woman. American - 1960's and 1996 - 5.75" to 9" Tall. Excellent or Better Condition. **Additional Shipping Charge Due To Large Lot Size** Estimate: 75.00 - 100.00



434 Bust of JFK on Base

American - 1960's - 8" Tall. Very Fine Condition. **Additional Shipping Charge Due To Large Lot Size** Estimate: 75.00 - 100.00



435 Two Sculptures

American - 1930's to 1960's - 9.25" Tall. One in the shape of a Gold Prospector the other a Native American. Excellent Condition. **Additional Shipping Charge Due To Large Lot Size** Estimate: 75.00 - 100.00



436 Two Church Themed Sculptures

French - 1930's to 1940's - 7 1/4" / 8 1/2" Tall. One of Joan of Arc, the other of Madonna and Child for Notre Dame de Paris. Pristine Condition. **Additional Shipping Charge Due To Large Lot Size** Estimate: 75.00 - 100.00



437 Abraham Lincoln The Hoosier Youth

American - 1935 - 9 1/4" Tall. Excellent Plus Condition. **Additional Shipping Charge Due To Large Lot Size** Estimate: 100.00 - 150.00



Toy Stories - Cyber 16 3/25/2022

LARGER/ ADDITIONAL IMAGES ON LIVEAUCTIONEERS.COM

LOT #**438 French General on Pedestal**

French - 1890 - 7 3/4" Tall. Not sure who he is, but he is attractive and very manly. Very Fine Condition. Estimate: 100.00 - 150.00

**LOT #****444 Middle Eastern Souvenirs**

Various Makers - 1930's to 1980's - 2" to 8" Tall. Fine to Excellent Condition. **Additional Shipping Charge Due To Large Lot Size** Estimate: 100.00 - 150.00

**439 Two Sculptures**

European - 1930's - 9 1/4" / 10" Tall. One of Giacomo Puccini (the Italian Composer) and the other "Birmingham's Great Vulcan Blacksmith. Excellent Condition. Estimate: 75.00 - 125.00

**445 Large Group of Grecian / Roman Souvenirs**

25 Items. European - 1920's to 1980's - 2" to 8" Tall. Very Fine or Better Condition. **Additional Shipping Charge Due To Large Lot Size** Estimate: 125.00 - 175.00

**440 Early Roman Warrior on Marble Base**

European - 1930's - 11" Tall. Excellent Plus Condition. Estimate: 100.00 - 150.00

**446 Group of Asian Souvenirs**

12 Items. Mostly Thai. Asian - 1920's to 1970's - 1 1/2" to 7" Tall. Very Fine or Better Condition. **Additional Shipping Charge Due To Large Lot Size** Estimate: 75.00 - 125.00

**441 Five Assorted Sculptures**

European - 1950's to 1970's - 9" to 11" Tall. Excellent or Better Condition. Estimate: 75.00 - 125.00

**447 Group of Frontiersman and Native Americans**

14 items. American - 1930's to 1950's - 2" to 8 1/2" Tall. Excellent or Better Condition. **Additional Shipping Charge Due To Large Lot Size** Estimate: 75.00 - 125.00

**442 Large Assortment of Souvenir Busts**

23 Items. Various Makers. - 1930's to 1970's. 3" to 8" Tall. Very Fine or Better Condition. **Additional Shipping Charge Due To Large Lot Size** Estimate: 75.00 - 125.00

**443 Large Group of Souvenirs**

18 Items. Mostly Religious Themed. European - 1920's to 1970's - 3" to 7" Tall. Excellent or Better Condition. Estimate: 75.00 - 125.00

**448 Four Cathedral Souvenirs**

European - 1920's to 1950's - 3 3/4" to 6 1/4" Tall. Included are two Notre Dame, one Sacre Coeur and one Koln Cathedral. Excellent or Better Condition. Estimate: 100.00 - 150.00



Toy Stories - Cyber 16 3/25/2022

LARGER/ ADDITIONAL IMAGES ON LIVEAUCTIONEERS.COM

LOT #

449 Nine Assorted Banthrico Banks

Chicago, IL. 1950's to 1960's. Fine to Excellent Condition. Estimate: 75.00 - 125.00



LOT #

455 Kuwait Towers / Incense Burners

Middle Eastern / Asian - 1940's to 1980's - 8" to 10" Tall. Very Fine Condition. Estimate: 150.00 - 200.00



450 Seven Egyptian Themed Souvenirs

Various Makers - 1930's to 1980's - 5 1/2" to 11" Tall. Excellent to Pristine Condition. Estimate: 100.00 - 150.00



456 Three Indian Souvenirs / Monuments

Asian - 1930's to 1940's - 5" to 8" Tall. Made of Brass. Very Fine Condition. Estimate: 150.00 - 200.00



451 Group of Roman Columns and Amphitheaters

European/American - 1910's to 1970's - 3" to 8" Tall. Two complete bookend sets. Fine to Excellent Condition. Estimate: 75.00 - 100.00



457 Four Indian / Asian Temples

Asian - 1940's to 1970's - 4 1/2" to 6 1/2" Tall. Excellent to Pristine Condition. Estimate: 75.00 - 125.00



452 Six Assorted Bookends

Mostly American - 1910's to 1920's - 4" to 6" Tall. Very Fine to Excellent Condition. Estimate: 75.00 - 100.00



458 Italian Tower Lamp

European - 1930's - 10 1/2" Tall. Mounted to 5 3/4" Square Base. We have not tested to see if it works. Excellent Plus Condition. Estimate: 125.00 - 175.00



453 Large Group of Egyptian Souvenirs

14 Items. Various Makers - 1920's to 2000's - 3" to 9" Tall. The thermometer for the obelisk is broken and the mummy must be reattached to its base. Very Good to Excellent Condition. Estimate: 100.00 - 150.00



459 Mosque Lamp

Middle Eastern - 1940's - 9 3/4" Tall. Mounted to 8" Tiered Marble Base. We have not tested to see if it works. Excellent Plus Condition. Estimate: 125.00 - 175.00



454 Five Assorted Tombs & Temples

Asian / Middle Eastern - 1950's to 1980's - 4" to 9" Tall. Very Fine to Excellent Condition. Estimate: 60.00 - 90.00



460 Three Souvenir / Desk Ornaments

American / European - 1920's to 1930's - 2 1/2" to 4 1/2" Tall. Included are a First / Second National Bank of Pittsburg Letter & Pen Holder, Sacre Coeur Pen & Ink Holder and a Vatican Letter Holder. Excellent to Pristine Condition. Estimate: 175.00 - 225.00



Toy Stories - Cyber 16 3/25/2022

LARGER/ ADDITIONAL IMAGES ON LIVEAUCTIONEERS.COM

LOT #**461 Five American Cathedral Souvenirs**

American - 1950's to 1960's - 3" to 5 1/2" Tall. Four National Church of Immaculate Conception and one St. Mary's in the Mountains, Virginia City, Nevada. Excellent or Better Condition. One steeple broken. Estimate: 75.00 - 100.00

**462 Four Souvenir Statues**

American / European - 1920's to 1930's - 4" to 7" Tall. Included are Yeoman of the Guard Match Safe, Our Soldier Boy Photograph Holder, Sir William Wallace Ben Eagles Whiskey Holder and Christopher Columbus made by Bloomingdale Bros. Very Fine to Excellent Condition. Estimate: 200.00 - 300.00

**463 Three French Statues**

French - 1920's to 1930's - 7" to 12 1/4" Tall. One for Bucheron (A region in France), one Rodin's "Thinker" and one for Industry. Very Fine to Excellent Condition. Estimate: 175.00 - 225.00

**464 Two Viennese / Austrian Statues**

Austrian - 1910's to 1920's - 5 3/4" to 7" Tall. Excellent Condition. Estimate: 175.00 - 225.00

**465 Five American Souvenirs**

American - 1940's to 1950's - 3 1/2" to 5" Tall. Included are Hawaii 50th State, Spirit of '76, Tom Sawyer/Huck Finn, Lincoln at Gettysburg and an award for the Champion Bull Thrower. Excellent Condition. Estimate: 75.00 - 125.00

**LOT #****466 Fifteen Souvenir Statues**

Mostly European themes. Various Makers. 1950's to 1980's - 3 1/2" to 5" Tall. Excellent Condition Estimate: 60.00 - 90.00

**467 Group of Building Banks / Parts**

Mostly American. Poor Condition. Estimate: 50.00 - 75.00

**468 Group of Bookends / Souvenirs**

Mostly American - 1920's to 1930's - 4" to 6 1/4" Tall. One cigarette dispenser, Lincoln Memorial by Bradley & Hubbard and 3 others. Fine Condition. Estimate: 80.00 - 120.00

**469 Modern Bookends**

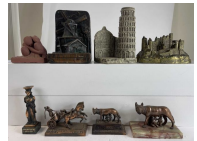
Various Makers - 2000's. Pristine Condition. Estimate: 30.00 - 50.00

**470 Seven Souvenir Bookends**

American - 1920's to 1930's - 4 3/4" to 7 1/4" Tall. Very Good to Very Fine Condition. Estimate: 125.00 - 175.00

**471 Eight European Souvenirs**

European - 1930's to 1960's - Varying Sizes. Very Fine Condition. Estimate: 90.00 - 120.00



Toy Stories - Cyber 16 3/25/2022

LARGER/ ADDITIONAL IMAGES ON LIVEAUCTIONEERS.COM

LOT #**472 Cleopatra's Needle - Grand Tour**

A "Grand Tour" Souvenir. European - 1880's - 10 3/4" Tall. This souvenir was made for and sold in London as part of the "Grand Tour" highlighted sights.

Excellent Plus Condition. Thermometer Glass Missing. Estimate: 600.00 - 800.00

**LOT #****476 Two Obelisk Souvenirs**

European - 1930's to 1940's - 9" to 10" Tall. Excellent Condition. Winged lion detached. Estimate: 125.00 - 175.00

**473 Obelisk with Winged Angel - Grand Tour**

European - 1880's - 8 1/2" Tall. Another famed obelisk from the "Grand Tour" of European cities. The Grand Tour was principally a 17th to 19th Century custom of a traditional trip through Europe.

Typically and taken by upper-class young European men. Typically, accompanied by a chaperone or family member. Excellent Plus Condition. Thermometer broken.

Estimate: 500.00 - 700.00

**477 The Victory Column**

Berlin, Germany - 1880's - 13 1/2" Tall. The Victory Column was designed by Heinrich Strack in 1864 to commemorate the Prussian victory in the second Schleswig War. This was a souvenir of the "Grand Tour". It is quite rare. Excellent Condition. Missing tips of wings and right hand. Estimate: 1,250.00 - 1,750.00

**474 Obelisk Souvenir with Mozart**

European - 1930's - 10 1/4" Tall. This wonderful souvenir appears to double as a candle holder or possibly match holder. Excellent Plus Condition. Estimate: 125.00 - 175.00

**478 Two Tower Souvenirs**

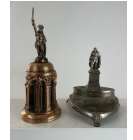
European - 1940's to 1950's - 7" to 9 1/2" Tall. The taller one is Czechoslovakian. Excellent Plus Condition. Estimate: 125.00 - 175.00

**475 Monument / Obelisk Souvenir**

European - 1930's - 7 1/4" Tall. Made of a copper plated alloy mounted to a cylindrical wooden base. It appears to have a statue of Christopher Columbus on top. Excellent Plus Condition. Estimate: 250.00 - 350.00

**479 Hermannsdenkmal / Michiel de Ruyter**

Monument Souvenirs. European - 1930's to 1950's - 5 1/4" to 8" Tall. Pristine Condition. Estimate: 125.00 - 175.00

**480 Three Souvenir Monuments**

European - 1920's to 1950's - 5" to 6 3/4" Tall. The middle one a match safe with strike clam shell. The clam shell with 3/4" crack. Very Fine to Pristine Condition. Estimate: 125.00 - 175.00



Toy Stories - Cyber 16 3/25/2022

LARGER/ ADDITIONAL IMAGES ON LIVEAUCTIONEERS.COM

LOT #

481 Three Statue Souvenirs

American - 1930's to 1960's - 5 1/4" to 7 1/2" Tall. One of JFK is marked Dal 1963, The American newspaper boy and lastly one of William Penn. Very Fine to Pristine Condition. Estimate: 125.00 - 175.00



LOT #

486 Four Arc de Triomphe Souvenirs

French - 1950's to 1970's - 5 1/2" to 8" Tall. Very Fine or Better Condition. Estimate: 75.00 - 100.00



482 Three Statue Souvenirs

American / European - 1930's to 1960's - 5 1/4" to 6 1/8" Tall. One of A. T. Still, the founder of Osteopathy, one of happy and sad investors and the last Napoleon on horseback. Excellent to Near Mint Condition. Estimate: 90.00 - 120.00



487 Sacre Coeur Cathedral Souvenir

French - 1960's - 6 1/4" Tall. A large scaled souvenir that is in superior condition. Pristine Condition. Estimate: 90.00 - 120.00



483 Two Totem Pole Souvenirs

American - 1940's to 1950's - 7 1/2" to 8 1/4" Tall. Both souvenirs for Washington State and Pacific Northwest Native American totem poles. Very Fine Condition. Estimate: 100.00 - 150.00



488 Four Cast Iron / Brass Cathedral Bookends

European - 1920's to 1930's - 5" to 7" Tall. Included are Notre Dame de Paris, Peterborough Cathedral, Lichfield Cathedral and Antwerp Cathedral. Very Fine to Excellent Condition. Estimate: 100.00 - 150.00



484 Discus Thrower / Atlas Souvenir Statues

European - 1950's - 8" to 9 1/2" Tall. Excellent Plus Condition. Estimate: 100.00 - 150.00



489 Bust of a Youth Statue

Marked W. B. on a Shield. American - 1930's - 4 1/4" Tall. Excellent Condition. Estimate: 80.00 - 120.00



485 Two French Cathedral Bookends

French - 1930's - 8" to 9 1/4" Tall. The shorter one for Reims Cathedral. Fine Condition. Estimate: 60.00 - 90.00



490 Early Statue Thermometer

Possibly French - 1880's - 5 1/2" Tall. Possibly made for the "Grand Tour". The thermometer appears to be intact and functioning. Very Fine Condition. Estimate: 250.00 - 350.00



491 Two Porcelain British Souvenirs

English - 1940's to 1950's - 3 1/4" to 6" Tall. Excellent Plus Condition. Estimate: 50.00 - 75.00



Toy Stories - Cyber 16 3/25/2022

LARGER/ ADDITIONAL IMAGES ON LIVEAUCTIONEERS.COM

LOT #

492 Fluor Building Match Holder
and Ashtray. American - 1950's - 4 5/8" Tall. Excellent Condition. Fluor is an American Corporation headquartered in California that began operations about 1915. Estimate: 100.00 - 150.00



493 Stone Incense Burner
Japanese Temple. Japanese - 1930's/1940's - 8 1/2" Tall. Excellent Plus Condition. Estimate: 75.00 - 100.00



494 Pagoda Incense Burner
Japanese - 1930's - 7 1/2" Tall. Excellent Condition. Needs a cleaning, minor chips to wood base. Estimate: 80.00 - 120.00



495 Japanese Temple Souvenir
Japanese - 1970's - 13" Tall. Pristine Condition. Estimate: 50.00 - 75.00



496 Turkish Palace Souvenir
European - 1930's - 5 1/4" Tall. This souvenir can also be used to burn incense. Pristine Condition. Estimate: 100.00 - 150.00



497 Two Japanese Souvenir Buildings
Japanese - 1930's/1940's - 4" to 5 3/4" Tall. One a cigarette dispenser and the other a small jewelry box. Excellent Plus Condition. Estimate: 125.00 - 175.00



LOT #

498 Two Tower Souvenirs
Unknown Makers - 1970's - 8 3/4" to 9 1/4" Tall. Very Good Condition. Estimate: 30.00 - 50.00



499 Five Assorted Building Bookends
American - 1920's to 1930's - 4" to 5 1/2" Tall. Several of College Administration Buildings. Very Fine or Better Condition. Estimate: 75.00 - 100.00



500 Two Pair / Two Single Bookends
European - 1920's to 1930's - 4 3/4" to 6" Tall. This lot includes a pair of Brussels Cathedral, a pair of Lichfield Cathedral, British Parliament and 1 other. Excellent Plus to Pristine Condition. Estimate: 150.00 - 200.00



501 Three Monument Souvenirs
European - 1930's to 1940's - 4" to 5 1/2" Tall. Two Leipzig Denkmal and one other. Fine or Better Condition. Estimate: 50.00 - 75.00



502 Skyscraper Wall Plaque
American - 1920's - 9" Tall x 6" Wide. Very Fine Condition. Estimate: 50.00 - 75.00



503 Two Souvenirs
Varying Makers / Countries - 1960's - 8" Tall. One a clock and one a Bottle of Scotch Whiskey. Excellent Condition. Estimate: 50.00 - 75.00



Toy Stories - Cyber 16 3/25/2022

LARGER/ ADDITIONAL IMAGES ON LIVEAUCTIONEERS.COM

LOT #

504 Three Paperweights

American - 1940's / 1972 - 2 3/4" to 4 3/4" Tall. Fine Condition. Estimate: 40.00 - 60.00



505 Three Hispanic Souvenirs

European - 1930's to 1980's - 5" to 7 1/2" Tall. One appears to be silver plated. Very Fine or Better Condition. Estimate: 75.00 - 100.00



506 Mount Saint Michel Souvenirs

French - 1920's to 1930's - 5 1/2" to 6 1/2" Long. We believe this is the Cathedral at Mount Saint Michael as it is on rocks and appears to have a dock out front. Very Fine Condition Estimate: 125.00 - 175.00



507 Three Iwo Jima Monument Souvenirs

American - 1940's to 1960's - 3 1/2" to 8" Long. Very Fine or Better Condition. Estimate: 80.00 - 120.00



508 Bull & Bear Bookends

for Merrill Lynch Company. American - 1970's - 5 1/2" Long. Brass mounted to granite bases. Excellent Plus Condition. Estimate: 75.00 - 100.00



509 Two Souvenirs

European / American - 1930 / 1940 - 5 3/4" - 7 3/4" Tall. One the Hoover Dam and the other an early palace. One made of composite and the other brass. Fine Condition. Estimate: 60.00 - 90.00



LOT #

510 Three Football Stadiums / Fort McHenry Souvenirs

American - 1930's to 1980's - 5 1/2" to 7 1/2" Long. One of Michigan's Stadium and the 1939 Champions, The Rose Bowl, The Millennium Stadium in Cardiff (English Football) and Fort McHenry. Excellent or Better Condition. Estimate: 100.00 - 150.00



511 Souvenirs of the World

1950's - 1980's - Varying Sizes. Very Fine to Pristine Condition. **Additional Shipping Charge Due To Large Lot Size** Estimate: 40.00 - 60.00



512 Souvenirs of the World - Ceramic

1960's to 1970's. Varying Sizes. Several working music boxes. Excellent Condition. **Additional Shipping Charge Due To Large Lot Size** Estimate: 50.00 - 75.00



513 Ceramic Souvenirs of the World

Some plastic. 1970's to 1990's. Varying Sizes. Excellent Condition. **Additional Shipping Charge Due To Large Lot Size** Estimate: 50.00 - 75.00



514 Nine Globe Souvenirs

American - 1960's to 1990's - Varying Sizes. Fine or Better Condition. **Additional Shipping Charge Due To Large Lot Size** Estimate: 30.00 - 50.00



Toy Stories - Cyber 16 3/25/2022

LARGER/ ADDITIONAL IMAGES ON LIVEAUCTIONEERS.COM

LOT #

515 Seven Modern Building Banks

1980's to 2000's. Varying Sizes. Fine or Better Condition. **Additional Shipping Charge Due To Large Lot Size** Estimate: 40.00 - 60.00



LOT #

520 Two Tokyo Towers

Japanese - 1960's to 1970's - 6 1/2" to 11" Tall. One made of aluminum and the other plastic. Very Fine Condition. Estimate: 50.00 - 75.00



516 Three European Radio Towers

European - 1950's to 1960's - 9 1/4" to 10 3/4" Tall. One from Rotterdam, one from Ostankino and one other. Excellent or Better Condition. Estimate: 250.00 - 325.00



521 Eight Assorted Towers

Mostly European - 1960's to 1970's - 4" to 7" Tall. Excellent Condition. Estimate: 125.00 - 175.00



517 Three Radio / Television Towers

European - 1950's to 1960's - 7" to 7 3/4" Tall. One from Dusseldorf, one Central Radio of Japan and one Menara Kuala Lumpur. Excellent Condition. Estimate: 175.00 - 225.00



522 Three Souvenirs

European - 1950's to 1960's - 5" to 6 1/2" Tall. Berlin Tower, Berlin Victory Column and one other. Excellent or Better Condition. Estimate: 125.00 - 175.00



518 Two Sydney Australia Towers

1960's to 1970's - 8" to 11" Tall. One made of wood and the other ceramic. Very Fine Condition. Estimate: 60.00 - 80.00



523 Chicago Picasso Sculpture

American - 1967 - 5 3/4" Tall. The Chicago Picasso is an untitled, monumental sculpture by Pablo Picasso that is situated in Daley Plaza in Chicago. It is some 50 feet tall and was fabricated by American Bridge Company. Excellent Plus Condition. Estimate: 250.00 - 350.00



519 Three Towers

American / European - 1960's to 1970's - 11" to 12" Tall. One TV/Radio Tower from Stuttgart, one Seattle Space Needle (doubles as a pen) and one other. Excellent Condition. Estimate: 150.00 - 200.00



524 Asian Sculpture Souvenir

Japanese - 1970's - 9 5/8" Tall. Excellent Plus Condition. Estimate: 40.00 - 60.00



525 Peter Stuyvesant Statue on Base

For the Stuyvesant Insurance Company. American - 1930's - 5" Tall. Excellent Plus Condition. Estimate: 75.00 - 100.00



Toy Stories - Cyber 16 3/25/2022

LARGER/ ADDITIONAL IMAGES ON LIVEAUCTIONEERS.COM

LOT #

526 Observatory Tower

Made in France - 1930's - 10" Tall. Made of some form of brass alloy with a revolving paper insert. Excellent Plus Condition. Estimate: 150.00 - 225.00



527 The Mole Antonelliana

Italian - 1930's - 10 1/4" Tall. The Mole Antonelliana is a major landmark building in Turin, Italy. "Mole" in Italian means a building of monumental proportions. Construction of the building began in 1863 and was finished in 1889. Pristine Condition. Estimate: 150.00 - 200.00



528 Three Little Brown Church Banks

American - 1940's to 1950's - 3 1/4" to 6" Tall. Very Fine Condition. The smallest missing its bottom plate and coin slot. Estimate: 60.00 - 90.00



529 Two Souvenir Buildings

American - 1990's - 5 1/2" to 5 7/8" Tall. Included are St. Paul's Lutheran Church, by A. C. Rehberger and the other is the University Hall at Northwestern University. Pristine Condition. Top of Church spire is missing. Estimate: 60.00 - 90.00



530 Second Temple of Jerusalem Bank

Made by Reuran Masel. Miami, FL. - 1990 - 5 1/2" Tall. Pristine Condition. Estimate: 40.00 - 60.00



LOT #

531 Three Banthrico Banks

Chicago, IL. - 1960's to 1970's - 7" to 8" Tall. Included are a Bankers Trust, Sears Tower and a Northern Mutual (missing its base plate). Fine to Pristine Condition. Estimate: 50.00 - 75.00



532 Six Banthrico Bank Buildings

Chicago, IL. - 1950's to 1970's - 3" to 6 1/4" Tall. Fine to Pristine Condition. Estimate: 75.00 - 100.00



533 Eight Banthrico Bank Buildings

Chicago, IL. - 1960's to 1980's. Fine to Pristine Condition. Estimate: 75.00 - 100.00



534 Guadalcanal Engr Doorstop

American - 1930's - 8" Long. Made of aluminum or similar type alloy. Excellent Condition. Estimate: 75.00 - 100.00



535 Four Modern Banks

American / Canadian - 1970's to 1990's. Included are a cast iron Covered Bridge, the Pink House (Wellsville, NY), L'Exeter Co-op Bank (Canadian) and the Steeple Building. Very Good to Excellent Condition. Estimate: 100.00 - 150.00



536 Cottage Doorstop

English - 1930's - 8" Tall. Very Fine Condition. Estimate: 75.00 - 100.00



Toy Stories - Cyber 16 3/25/2022

LARGER/ ADDITIONAL IMAGES ON LIVEAUCTIONEERS.COM

LOT #

537 Four Building Banks

American - 1920's - 2 1/2" to 3 1/3" Tall. Good to Very Good Condition. One missing twist pin. Estimate: 50.00 - 75.00



LOT #

543 Four Domed Banks

American - 1890's to 1910's. Poor to Good Condition. Estimate: 40.00 - 60.00



538 Three Building Banks

American - 1890's - 2 3/8" - 3 1/8" Tall. A Hexagonal Bank, a Tiny State Bank and a Rose Window Bank. Fine to Excellent Condition. Estimate: 175.00 - 225.00



544 Skyscraper / Dome Banks

American - 1910's. Two repainted, small one missing 2 turrets. Estimate: 25.00 - 40.00



539 Three Building Banks

American - 1880's to 1910's - 3 1/2" to 4" Tall. Included are a Medium Crown (an old repaint), Six Sided Building and 4" Tall State Bank. Very Good Condition. Estimate: 80.00 - 120.00



545 Three Skyscraper Banks

A. C. Williams. Ravenna, Ohio - 1910's - 3 1/2" to 7" Tall. Very Fine Condition. The big one missing its trap. Estimate: 125.00 - 175.00



540 Three Building Banks

American - 1880's to 1910's - 3" to 5 1/4" Tall. Included are a House with Porch Small and Large and a Roof Bank. Very Fine Condition. Estimate: 100.00 - 150.00



546 Small High Rise & Flat Iron Buildings

Kenton Hardware. Kenton, Ohio - 1910's - 3 1/4" Tall. The Flat Iron in Very Good Condition and small High Rise a repaint. Estimate: 125.00 - 175.00



541 Three Building Banks

American - 1890's to 1900's - 2 3/4" to 4 1/4" Tall. Included are a Cone Building (Fair), a Castle (Broken Turret) and a Jewel (No Trap). Fair to Good Condition. Estimate: 100.00 - 150.00



547 Three Building Banks

Kenton Hardware / A. C. Williams. American - 1910's - 4 5/8" - 6" Tall. Included are a Domed Building (Green and Gold), a 4 7/8" tall High Rise and a Tiered High Rise. Fine to Very Fine Condition. Estimate: 200.00 - 275.00



542 Four Building Banks

American - 1880's to 1890's - 2 3/4" to 3 1/4" Tall. Fair to Very Good Condition. Some with replaced twist pins. Estimate: 40.00 - 60.00



548 Two Flat Iron Banks

Kenton Hardware. Kenton, Ohio - 1915 - 5 1/2" to 6" Tall. Fine Condition. One missing trap. Estimate: 125.00 - 175.00



Toy Stories - Cyber 16 3/25/2022

LARGER/ ADDITIONAL IMAGES ON LIVEAUCTIONEERS.COM

LOT #

549 Two Library Banks

American - 1920's. Very Fine Condition.
Estimate: 150.00 - 200.00



550 Mt. Fort Hope / Bungalow Iron Banks

American - 1920's to 1930's. The Bungalow in fair paint and missing its coin trap. Estimate: 100.00 - 150.00



551 Egyptian Tomb Bank

English - 1910's - 6 1/4" Tall. A very scarce bank that is in Excellent Condition. Estimate: 200.00 - 275.00



552 Glass Log Cabin Bank / Fort Pitt Jewelry Box

Pittsburgh, PA. - 1920's. Excellent to Pristine Condition. Estimate: 100.00 - 150.00



553 United / Country Iron Banks

American / English - 1910's / 1930's. Excellent to Pristine Condition. Estimate: 150.00 - 200.00



554 Three Banks

American - 1880's - 1980's. Poor to Excellent Condition. Estimate: 40.00 - 60.00



555 Billiken & Six Bust Banks

American - 1920's to 1970's. Good to Excellent Condition. Some missing traps. Estimate: 40.00 - 60.00



LOT #

556 Large Group of Political Busts

15 Items. American / European - 1930's to 1960's - 1 3/4" to 3 1/3" Tall. Fine or Better Condition. Estimate: 75.00 - 100.00



557 Washington / Lincoln / Theodore Roosevelt Busts

American - 1930's - 4 1/2" - 5" Tall. George Washington sculpted in Brass by John G. T. Shoe. Excellent Condition. Estimate: 100.00 - 150.00



558 Five Political Busts

American - 1930's to 1940's - 5" to 5 3/4" Tall. Robert E. Lee, Abraham Lincoln, Herbert Hoover, Ben Franklin and George Washington. Several missing felt or tin bottoms. Fine to Excellent Condition. Estimate: 75.00 - 100.00



559 Three European Busts

European - 1930's - 6 1/2" to 8" Tall. Included are Vladimir Lenin, Pope Pius X and Hindenburg mounted to a marble base. Fine to Pristine Condition. Estimate: 100.00 - 150.00



560 Bust of Jefferson with Spread Winged Eagle

American - Dated 1903 - 8" Tall. This beautiful bust lists Jefferson's birth year and year of death. The makers initials on reverse and dated 1903. Mounted to a black onyx tiered base. Excellent Plus Condition. Estimate: 150.00 - 200.00



Toy Stories - Cyber 16 3/25/2022

LARGER/ ADDITIONAL IMAGES ON LIVEAUCTIONEERS.COM

LOT #**561 State of Liberty with Light Bulb**

American - 1920's - 15 1/2" Tall. The wiring for the electrification of her flame bulb has been cut. Fine Condition. Missing one spike in her crown. Estimate: 175.00 - 225.00

**562 Statue of Liberty Clock**

American - 1930's - 14" Tall. The clock mechanism is functioning, the wire to electrify her has been cut. Excellent Condition. Estimate: 150.00 - 200.00

**563 Victory Tower - Rajasthan**

Northwest India - 1920's - 19" Tall. The Victory Tower in Rajasthan was built in Fort Chittor in 1448. It was erected by Rana Kumbha (ruled 1433 - 1468) to commemorate his victory over the Muslim Rule in Delhi. This fantastic souvenir is made of brass and wood. Excellent Condition. Estimate: 350.00 - 450.00

**564 Mount Saint Michel Souvenir**

French - 1940's - 6 5/8" Long. Excellent Plus Condition. Estimate: 75.00 - 100.00

**565 Goodyear Zeppelin Bank**

Made by Duralumin. American - 1930's. Excellent Condition. Estimate: 125.00 - 175.00

**LOT #****566 Early Skyscraper (Chalk)**

American - 1930's - 6 1/2" Tall. Very Fine Condition. Estimate: 50.00 - 75.00

**567 Westminster Abbey Iron Bank**

Sydenham & McOustra. English - 1910's - 6 1/4" Tall. Excellent Condition. Estimate: 125.00 - 175.00

**568 Den Danske Building**

Danish - 1920's - 4 5/8" Tall. Excellent Condition. Estimate: 60.00 - 90.00

**569 Two Building Banks**

Cast Iron and Tin. American - 1890's - 4 1/2" Tall. The Victorian House Large has a replaced twist pin. Good to Very Good Condition. Estimate: 50.00 - 75.00

**570 Totem Pole / Teepee Banks**

American - 1950's - 5 5/8" to 7" Tall. Excellent Condition. Both missing their tin baseplates. Estimate: 50.00 - 75.00

**571 Two Banthrico Banks**

American - 1960's - 3 3/4" to 4" Tall. One for the Twin Domes in Carlsbad, New Mexico and the other for the Deerfield State Bank. Excellent Condition. Both missing their tin baseplates. Estimate: 50.00 - 75.00



Toy Stories - Cyber 16 3/25/2022

LARGER/ ADDITIONAL IMAGES ON LIVEAUCTIONEERS.COM

LOT #**572 Two Bank Buildings**

Rehberger Mfg. Co. Chicago, Illinois - 1930's - 3 5/8" to 3 7/8" Long. One for the Immel State Bank of California and the other for the Union Eastern Trust Company of St. Louis. Both banks are in superior condition and retain their original traps. Pristine Condition. Estimate: 250.00 - 325.00

**LOT #****576 Two Bank Buildings (KLT)**

Rehberger Company. Chicago, Illinois - 1930's - 2 7/8" to 3 3/4" Long. Included are 1st National Bank and Central Wisconsin Trust and the Fletcher American National Bank of Indianapolis. Excellent Condition. Both retain traps, longer one missing locking mechanism. Estimate: 175.00 - 225.00

**573 Three Bank Buildings**

Rehberger Mfg. Co. Chicago, Illinois - 1930's - 3 3/4" to 4 1/4" Long. Included are a First National Bank of Floral Park, a Cragin State Bank and a Mall County National Bank of Juliet, Illinois. All Excellent Plus Condition. But missing their traps. Estimate: 150.00 - 200.00

**577 Two Building Souvenirs**

One an Inkwell. American - 1930's - 3 3/4" to 4 1/4" Long. The longer one the inkwell for the City National Bank of Evansville, IN. and the other for the Lincoln Bank and Trust Company. Fine to Very Fine Condition. Inkwell worn on top. Estimate: 100.00 - 150.00

**574 Two Bank Buildings**

American - 1930's/1950's - 3 1/8" to 4 1/8" Long. Included are The Bank of Personal Service in Milwaukee (Rehberger) and the First Federal of Detroit (Banthrico). Very Fine Condition. Longer one missing trap. Estimate: 75.00 - 100.00

**578 Tall Pagoda / Temple Bank (KLT)**

Japanese - 1930's - 8 1/2" Tall. We have never seen this impressive still bank before! Excellent Plus Condition. Trap and mechanism intact but we don't have key to lock it. Estimate: 150.00 - 200.00

**575 Two Bank Buildings (KLT)**

American - 1930's - 3 3/4" to 4" Long. One for the Merchants National Bank and the other for the Fountainhead Chiropractic Hospital. This bank was given to donors who made large donations to the hospital fund. Excellent Plus Condition. Estimate: 200.00 - 275.00

**579 Travelers Insurance Company Inkwell**

American - Dated 1924 - 7 1/4" Tall. Very Fine Condition. Missing glass well. Estimate: 125.00 - 175.00

**580 Two Souvenir Still Banks**

American - 1930's - 3 3/4" Long. The Chapel bank is quite scarce painted in gold (most are silver) and is in Very Fine Condition. Lincoln's Birth House is in Pristine Condition. Estimate: 200.00 - 300.00



Toy Stories - Cyber 16 3/25/2022

LARGER/ ADDITIONAL IMAGES ON LIVEAUCTIONEERS.COM

LOT #

581 Panama Pacific International Souvenir

Made by the Art Metal Works. Newark, NJ - 1915 - 4" Long. This is the official Panama Pacific souvenir depicting the resting place of the first spadeful of earth turned by William H. Taft, President in building out the exposition. Very Fine Condition. Lacks trap. Estimate: 150.00 - 200.00



LOT #

586 Family Burial Mausoleum or Church

European - 1880's - 8 1/4" Tall. This appears to be a souvenir for the final resting place of some important European couple. It appears to be part of a Cathedral. Excellent Plus Condition. Estimate: 250.00 - 350.00



582 Red Riding Hood Inkwell

German - 1920 - 3" Long. Excellent Paint. Lacking hinge and glass inkwell. Estimate: 100.00 - 150.00



587 The Traders Bank

Canadian - 1890's - 8 1/2" Tall x 9 1/2" Long. Very Good Overall. Missing architectural elements from the cornice. **Additional Shipping Charge Due To Large Lot Size** Estimate: 150.00 - 200.00



583 Hiroshima Metal Souvenir

Japanese - 1940's - 4 5/8" Long. A souvenir from Hiroshima of the largest structure still standing after the dropping of the atom bomb on August 6, 1945. Pristine Condition. Estimate: 125.00 - 175.00



588 U. S. Capitol Souvenir Clock

Made by New Haven Clock Company. New Haven, Connecticut - Dated 1924 - 9 1/2" Long x 7 1/4" Tall. Excellent Plus Condition. Presently not working. Estimate: 100.00 - 150.00



584 Two Church Themed Souvenirs

American - 1950's - 3 1/2" to 4 1/8" Long. Included are "The Little Church of the West" and Saint Michaels in Queens. Excellent to Pristine Condition. Estimate: 75.00 - 125.00



589 U. S. Capitol / State Capitols / Others

American - 1920's to 2000's - Longest 7 3/4". Included are U. S. Capitol Bank, a Harrisburg State Capitol Souvenir, Kentucky Capitol Bookend and two others. Very Good to Excellent Condition. **Additional Shipping Charge Due To Large Lot Size** Estimate: 100.00 - 150.00



585 Italianate Church with Tower

Italian - 1930's - 4 1/4" Long. Excellent Condition. Estimate: 75.00 - 100.00



590 Ten Gateway Arch Souvenirs

American / Japanese - 1960's to 2000's - 2" to 8" Tall. Fine to Excellent Condition. **Additional Shipping Charge Due To Large Lot Size** Estimate: 60.00 - 90.00



Toy Stories - Cyber 16 3/25/2022

LARGER/ ADDITIONAL IMAGES ON LIVEAUCTIONEERS.COM

LOT #

591 Eleven Egyptian Themed Souvenirs

Most European made - 1940's to 1960's - 2" to 11" Long. Very Fine Condition.

Additional Shipping Charge Due To Large Lot Size Estimate: 75.00 - 100.00



LOT #

596 Seven Souvenir Paperweights

Mostly American - 1930's to 1980's - 3" to 5" Tall. Fine Condition. **Additional Shipping Charge Due To Large Lot Size**

Estimate: 40.00 - 60.00



592 Ten Souvenirs of the World

Mostly European - 1950's to 1990's. Very Fine or Better Condition. **Additional Shipping Charge Due To Large Lot Size**

Estimate: 50.00 - 75.00



597 Approximately 35 - 40 Souvenirs

Pins and Keychains. American / European - 1930's to 1990's - 1 1/2" to 4". Very Fine Condition. Estimate: 50.00 - 75.00



593 Egyptian Bird Sculpture

French - 1990's - 11 1/2" Tall. A Louvre Museum souvenir. Excellent Plus Condition. **Additional Shipping Charge Due To Large Lot Size** Estimate: 60.00 - 90.00



598 Fifteen Souvenirs of the World

American / European - 1940's to 1990's. Made of many different materials. Several ceramic banks. Very Fine or Better Condition. Estimate: 50.00 - 75.00



594 Seventeen Souvenirs of the World

Mostly European - 1930's to 2000's. Fine to Pristine Condition. **Additional Shipping Charge Due To Large Lot Size**

Estimate: 75.00 - 100.00



599 Eight Ceramic Building Banks

American - 1950's to 1960's - 4" to 6" Long. Most Very Fine or Better Condition. Estimate: 60.00 - 90.00



595 28 Souvenir Medallions

Mostly American - 1930's to 1980's - 1 1/4" to 4 3/4" Diameter. Fine to Excellent Condition. **Additional Shipping Charge Due To Large Lot Size** Estimate: 50.00 - 75.00



600 Composite Souvenirs of the World

13 Items. Most European - 1970's to 2000's - 4" to 6" Long. Very Fine or Better Condition. **Additional Shipping Charge Due To Large Lot Size** Estimate: 60.00 - 90.00



601 Eleven Asian Souvenirs

Most are Japanese - 1930's to 2000's - Varying Sizes. Fine or Better Condition. **Additional Shipping Charge Due To Large Lot Size** Estimate: 60.00 - 90.00



Toy Stories - Cyber 16 3/25/2022

LARGER/ ADDITIONAL IMAGES ON LIVEAUCTIONEERS.COM

LOT #

602 Letters & Bottle Opener Souvenirs

American - 1930's to 2000's - 4" to 9" Tall.
 Included are seven letter openers, two
 bottle openers, one ruler and one
 thermometer key. Very Fine or Better
 Condition. **Additional Shipping Charge
 Due To Large Lot Size** Estimate: 60.00 -
 90.00



603 Lot of Souvenirs

Mostly European - 1950's to 2000's -
 Longest 13". Fine to Excellent Condition.
 Tower bridge broken. **Additional
 Shipping Charge Due To Large Lot Size**
 Estimate: 40.00 - 60.00



Cyber Toy Auctions

For consignment inquires
 please contact us.

All of our toys are vetted
 by experts and cataloged
 for online sale.

TOP RATED AUCTIONEER



Happy Collecting!



Bre Day
 412-841-0623
 bre@cybertoyauctions.com

Julian Abernethy
 908-323-3169
 julian@cybertoyauctions.com

Follow us
 Instagram - cybertoyauctions
 Facebook - cybertoyauctions
 Twitter - @cybertoyauction
 YouTube - Ray and Bre Live

www.cybertoyauctions.com
 #cybertoyauctions